

An intussuscepting colonic lipoma causing prolapse of the sigmoid colon in an adult

Intussusception is invagination of bowel into an adjacent section and is rare in adults. A 40-year-old woman presented with abdominal pain and haematochezia after passing intestinal tissue per rectum. An abdominal radiograph demonstrated a subtle ‘target sign’ of intussuscepted bowel in the rectum (*Figure 1a*); initially this was missed and the patient was referred with a simple rectal prolapse.

A subsequent computed tomography scan showed the sigmoid colon prolapsing out of

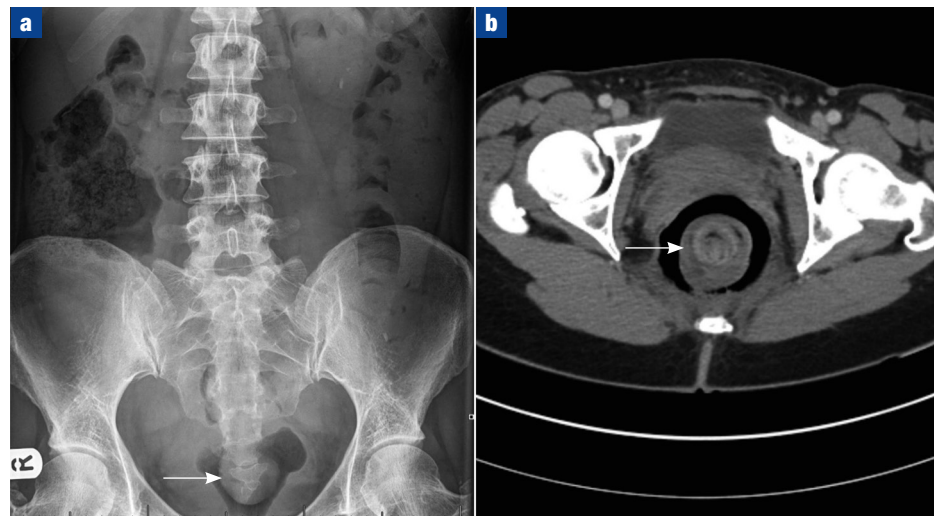
the anus as an intussusceptum (*Figure 1b*). Sigmoidoscopy found a giant polyp which was successfully managed with laparotomy, enterotomy and polypectomy.

Elliot et al (2014) previously described only four colonic lipomata reported as causing intussusception with a mass protruding from the anus. Comparatively the incidence of rectal prolapse is much higher. Computed tomography is the

gold standard for investigating suspected intussusception, but the utility of the humble abdominal radiograph is demonstrated in this case. **BJHM**

Elliott M, Martin J, Mullan F. Prolapsed giant sigmoid lipoma: a rare cause of adult ischaemic intussusception. *BMJ Case Rep.* 2014 May 22;2014. pii: bcr2014204036. <https://doi.org/10.1136/bcr-2014-204036>

Figure 1. a. Clerking abdominal radiograph that demonstrates target sign (arrow) in the rectum. **b.** Computed tomography scan of the abdomen and pelvis showing the intussusception arising from the sigmoid colon, descending through the rectum as a radiological target sign (arrow).



Mr Charles T West, General Surgical Registrar, Department of General Surgery, Dorset County Hospital NHS Foundation Trust, Dorchester, Dorset DT1 2JY

Mr Adam Pilarski, Core Surgical Trainee, Department of Digestive Diseases, Brighton and Sussex University Hospitals NHS Trust, Brighton

Mr Daniel White, Research Registrar, The Minimal Access Therapy Training Unit, Royal Surrey County Hospital NHS Foundation Trust, Guildford, Surrey

Mr David Ricketts, Consultant Surgeon, Department of Trauma and Orthopaedics, Brighton and Sussex University Hospitals NHS Trust, Brighton

Correspondence to: Mr CT West (ctimothyw@gmail.com)