

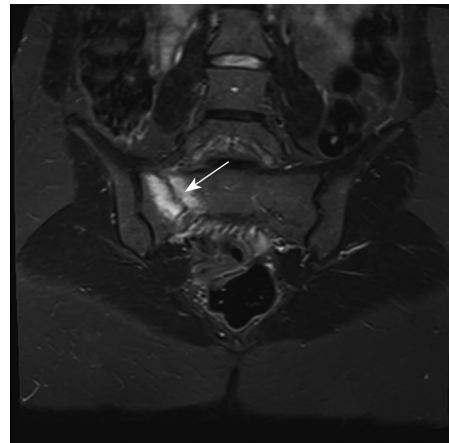
Postpartum sacral insufficiency fracture: magnetic resonance imaging findings

Postpartum sacral insufficiency fractures are a sub-group of stress fractures (Lee et al, 2008). Sacral insufficiency fractures are mainly seen in elderly women, and rarely in women who are pregnant or in the postpartum period (Karataş et al, 2008). Magnetic resonance imaging is the most sensitive and specific method for establishing the diagnosis in pregnant and postpartum women.

A 25-year-old woman presented to the authors' hospital complaining of low back

and right hip joint pain. This started during the third trimester of her pregnancy and gradually increased after birth. X-ray findings were normal. Magnetic resonance imaging showed a linear hypointense fracture line on a T1-weighted series starting from the sacrum ala and extending to the neural foramens with localization in the right sacrum. Bone marrow oedema was also seen adjacent to the fracture line as hyperintense areas on fat

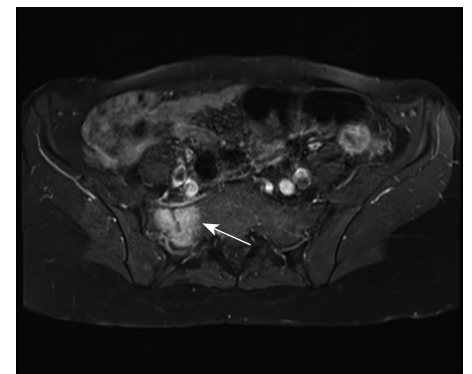
Figure 1. Coronal fat saturated T2-weighted magnetic resonance image shows oedematous signal changes (bone marrow oedema) adjacent to the fracture line as hyperintense areas (arrow).



saturated T2-weighted series (*Figure 1*) and contrast enhancement was detected (*Figure 2*). The findings were compatible with sacrum insufficiency fracture. **BJHM**

Karataş M, Başaran C, Ozgül E, Tarhan C, Ağildere AM. Postpartum sacral stress fracture: an unusual case of low-back and buttock pain. *Am J Phys Med Rehabil.* 2008 May;87(5):418–422. <https://doi.org/10.1097/PHM.0b013e318164a8e6>.
 Lee YJ, Bong HJ, Kim JT, Chung DS. Sacral insufficiency fracture, usually overlooked cause of lumbosacral pain. *J Korean Neurosurg Soc.* 2008 Sep;44(3):166–169. <https://doi.org/10.3340/jkns.2008.44.3.166>

Figure 2. Axial post contrast T1-weighted magnetic resonance image show contrast enhancement adjacent to the fracture line (arrow).



Dr Mesut Sivri, Specialist, Department of Radiology, University of Health Sciences, Ankara Child Health and Diseases Hematology Oncology Training and Research Hospital, Ankara, Turkey

Dr Alaaddin Nayman, Associate Professor, Department of Radiology, School of Medicine, Selcuk University, Konya, Turkey

Dr Hakan Cebeci, Assistant Professor, Department of Radiology, School of Medicine, Selcuk University, Konya, Turkey

Dr Mustafa Koplay, Professor, Department of Radiology, School of Medicine, Selcuk University, Konya, Turkey

Correspondence to: Dr M Sivri (drmesutsivri@gmail.com)