

## Persistent opacity on chest X-ray: take a closer look at the ribs

Zai Ru Cheng<sup>1</sup>

Biju Thomas<sup>1,2,3</sup>

Arun Pugalenthil<sup>1,2,3</sup>

Yi Hua Tan<sup>1,2,3</sup>

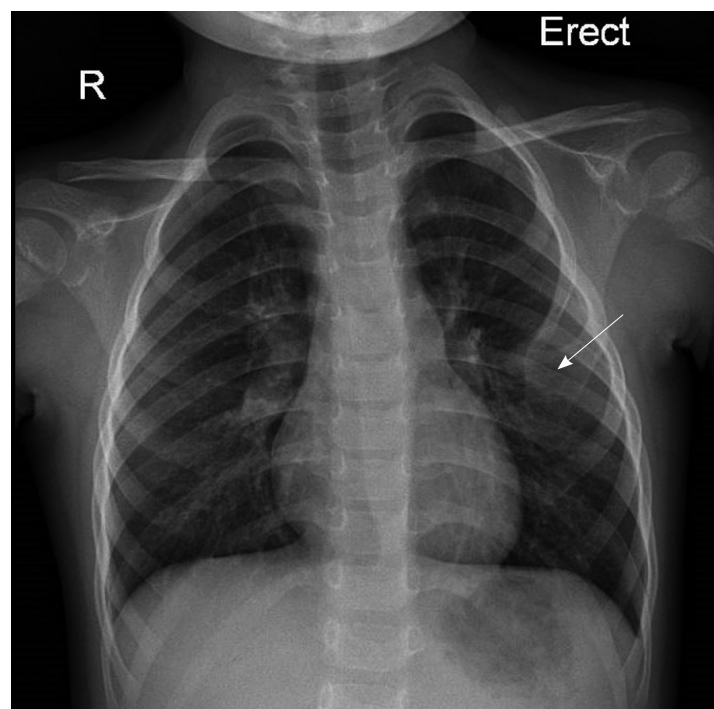
Oon Hoe Teoh<sup>1,2,3</sup>

Author details can be found  
at the end of this article

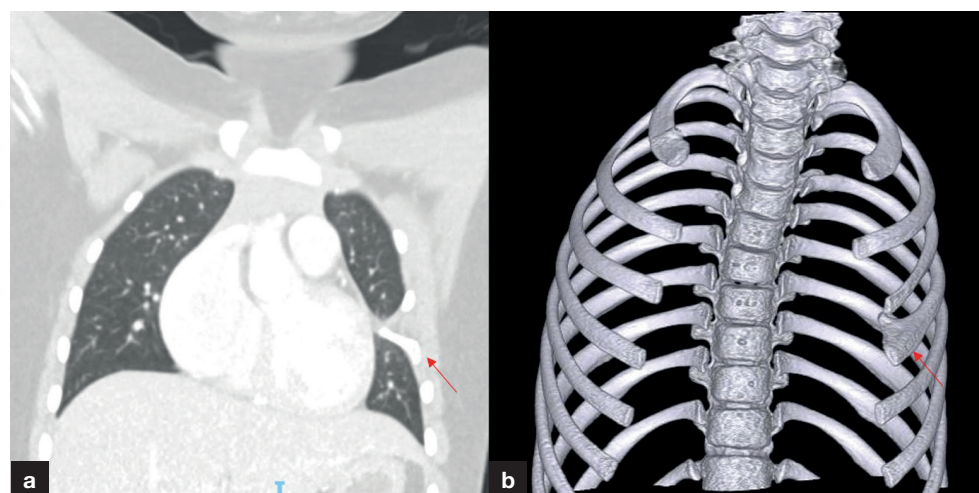
Correspondence to:

Zai Ru Cheng; cheng.zai.  
ru@kkh.com.sg

A 9-year-old girl with prolonged cough had a chest X-ray that showed a wedge-shaped opacity at the left fourth anterior rib (**Figure 1**). This finding persisted on repeat chest X-ray after resolution of the child's cough. Computed tomography revealed a bifid left fourth rib, with the upper anterior aspect of the bifid rib deviated posterior-medially, bringing with it and distorting the adjacent intercostal muscles. The three-dimensional computed tomography image shows the bifid rib (**Figure 2**), accounting for the opacity seen on chest X-ray.



**Figure 1.** Chest X-ray showing wedge-shaped opacity (arrow) in the left mid zone over the fourth anterior rib.



**Figure 2.** a. Computed tomography of the thorax showing bifid left fourth rib bringing with it and distorting the adjacent intercostal muscles. b. A three-dimensional computed tomography image of the bifid rib.

### How to cite this article:

Cheng ZR, Thomas B, Pugalenthil A, Tan YH, Teoh OH. Persistent opacity on chest X-ray: take a closer look at the ribs. *Br J Hosp Med.* 2020. <https://doi.org/10.12968/hmed.2020.0177>

Kaneko et al (2012) detected bifid rib incidentally in asymptomatic children. Bifid rib is associated with Gorlin–Goltz syndrome, a rare multisystem disorder with osseous, cutaneous, dental, ophthalmic, neurological and sexual anomalies, described by Jawa et al (2009). When the bifid rib presents as an isolated finding, Aignătoaei et al (2018) stated that this requires no further intervention. This patient was reassured that her isolated bifid rib was a benign variation of bony anatomy.

#### Author details

<sup>1</sup>Department of Paediatrics, KK Women's and Children's Hospital, Singapore

<sup>2</sup>Duke-NUS Medical School, Singapore

<sup>3</sup>NUS-Yong Loo Lin School of Medicine, Singapore

## References

- Aignătoaei AM, Moldoveanu CE, Căruntu I-D et al. Incidental imaging findings of congenital rib abnormalities: a case series and review of developmental concepts. *Folia Morphol*. 2018;77(2):386–392. <https://doi.org/10.5603/FM.a2017.0080>
- Jawa DS, Sircar K, Somani R et al. Gorlin-Goltz syndrome. *J Oral Maxillofac Pathol*. 2009;13(2):89–92. <https://doi.org/10.4103/0973-029X.57677>
- Kaneko H, Kitoh H, Mabuchi A et al. Isolated bifid rib: clinical and radiological findings in children. *Pediatr Int*. 2012;54(6):820–823. <https://doi.org/10.1111/j.1442-200X.2012.03672.x>