

Chest radiograph suggesting coronary artery calcification

Bailang Chen¹

Zhibin Lan¹

Author details can be found at the end of this article

Correspondence to:

Bailang Chen;
790421107@qq.com

A 61-year-old man presented to the department of ophthalmology of the authors' hospital with cataracts and was prepared for eye surgery. Preoperative chest radiography was performed to assess possible lung conditions as the patient was coughing. Chest radiography revealed a small circular calcification near the apex of the heart (**Figure 1a**). As this was a round calcification away from the hilar area, it was thought that it may be coronary calcification. To further clarify the situation, a chest computed tomography scan was performed, which showed severe coronary calcification. Finally, coronary computed tomography angiography was performed, which suggested extensive calcification of three coronary vessels (**Figure 1b**).

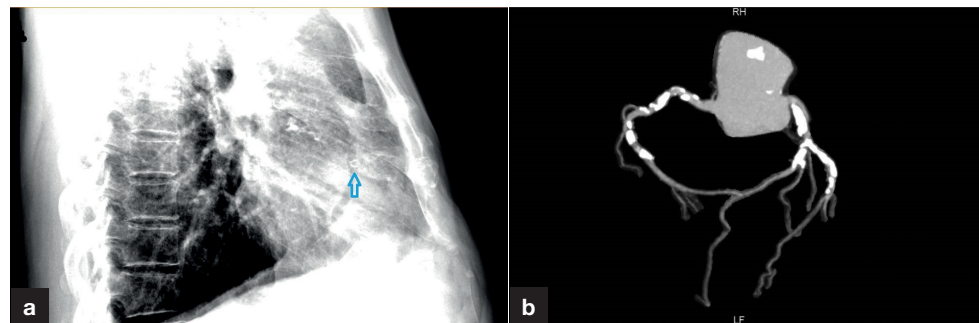


Figure 1. a. Chest radiography showing a small circular shape calcification near the apex of the heart. b. Coronary computed tomography angiography suggests extensive calcification of three branches.

Coronary calcification can be assessed by using computed tomography, although the high cost precludes routine use of this method. This case demonstrates that coronary calcification can be seen with simple chest radiography. This finding is very rare in patients with coronary artery calcification, unless the calcification is particularly extensive.

Author details

¹Department of Cardiovascular Center, The Seventh Affiliated Hospital, Sun Yat-Sen University, Shenzhen, China

How to cite this article:

Chen B, Lan Z. Chest radiograph suggesting coronary artery calcification. *Br J Hosp Med.* 2021. <https://doi.org/10.12968/hmed.2020.0619>