

Transtentorial meningocele mimicking arachnoid cyst in a 1-year-old girl

Ahmet T Akkuş¹

Gökhan Polat¹

Berhan Pirimoglu¹

Author details can be found at the end of this article

Correspondence to:

Berhan Pirimoglu;
berhan.dr@gmail.com

A 1-year-old girl was brought to the emergency department by her parents, who said that she had shown decreased activity for the last few days. Physical examination showed a focal defect in the calvarium. The patient had been operated on in another hospital for encephalocele. Cranial computed tomography and magnetic resonance imaging were performed, which showed a cystic structure isodense to CSF extending from the quadrigeminal cistern to the region of the occipital fontanelle along the interhemispheric fissure via the tentorium cerebelli defect (**Figure 1**). The cystic lesion was displacing the straight sinus (**Figure 1**). The cystic structure primarily suggested an arachnoid cyst. However, the unusual extension of the lesion, history of meningo-encephalocele surgery and tentorium cerebelli defect supported the diagnosis of intracranial transtentorial meningocele. Since arachnoid cysts are pressurised cystic structures, signs of compression to neighbouring tissues help with their diagnosis.

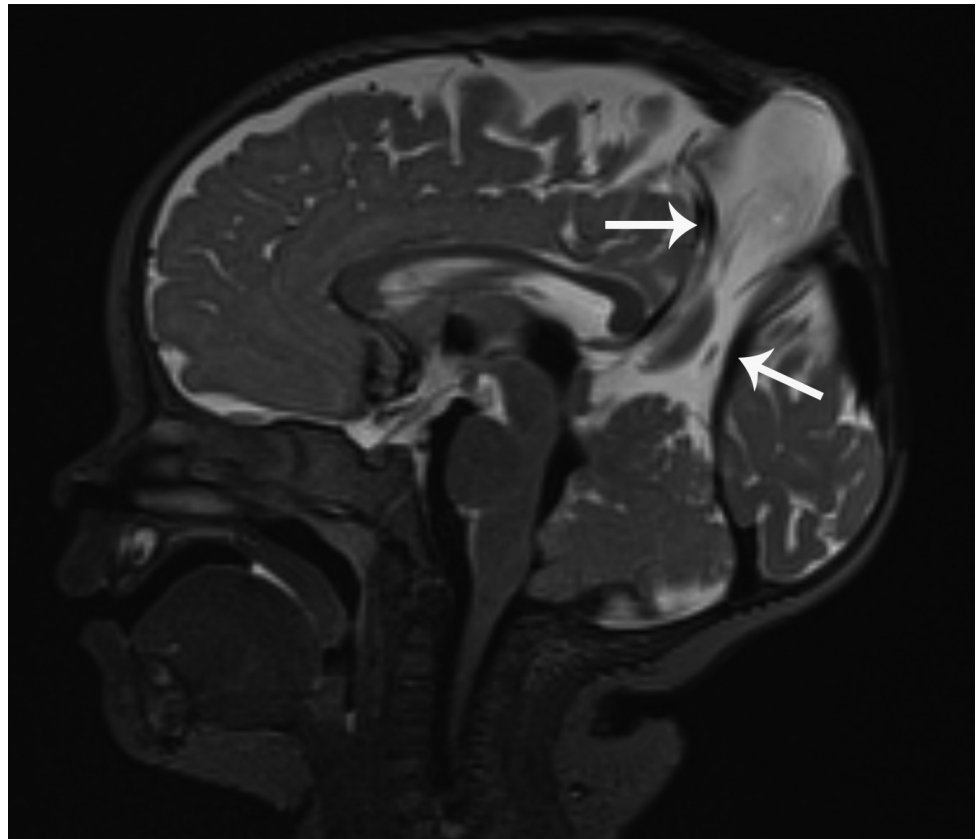


Figure 1. Sagittal T2-weighted magnetic resonance imaging shows the meningocele extending from quadrigeminal cistern to the region of occipital fontanelle along the interhemispheric fissure via tentorium cerebelli defect. The cystic lesion was displacing the straight sinus (arrows).

How to cite this article:

Akkuş AT, Polat G, Pirimoglu B. Transtentorial meningocele mimicking arachnoid cyst in a 1-year-old girl. *Br J Hosp Med.* 2021. <https://doi.org/10.12968/hmed.2021.0125>

Author details

¹Department of Radiology, Medical Faculty, Ataturk University, Erzurum, Turkey