

Osteoid osteoma: an unusual neoplasm of the mandibular condyle

Mehmet A Ozel¹

Hayri Ogul¹

Author details can be found at the end of this article

Correspondence to:
Hayri Ogul;
drhogul@gmail.com

A 77-year-old man was admitted to the authors' hospital with left posterior jaw pain. He had no history of maxillofacial trauma. He said that he used aspirin when his pain increased and this reduced the pain. Computed tomography demonstrated a lesion with focal hypodense nidus and sclerotic reactive bone structure on the lateral part of the left condyle of the mandible (**Figure 1a** and **b**). The clinical findings and computed tomography images led to a diagnosis of osteoid osteoma, and the patient was referred for surgery.

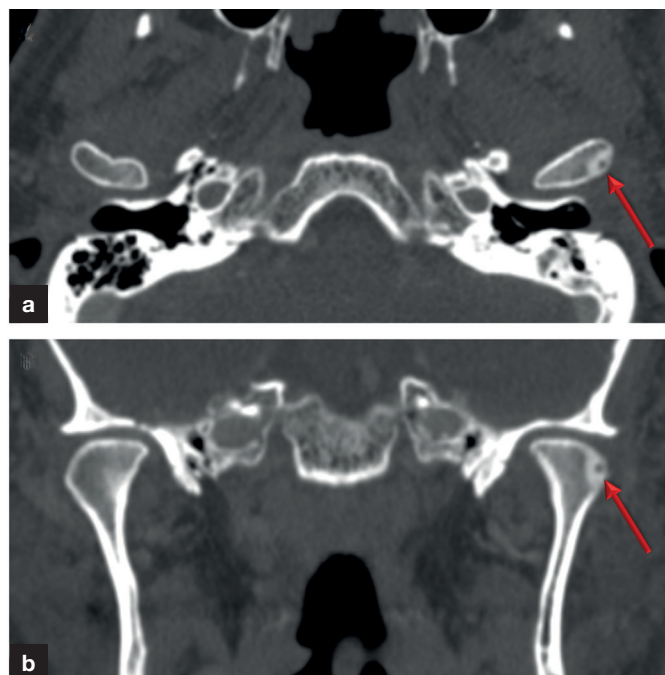


Figure 1. a. Axial and (b) coronal computed tomography scans show the nidus (arrows) of the osteoid osteoma.

Osteoid osteoma is rarely seen in the jaw bones (<1% of cases) (Karandikar et al, 2011), with 23% occurring in the angle and condyle of the mandible (An et al, 2013). Diagnosis may be delayed because of its atypical localisation. Computed tomography is important for early diagnosis.

Author details

¹Department of Radiology, Medical Faculty, Duzce University, Duzce, Turkey

References

- An SY, Shin HI, Choi KS et al. Unusual osteoid osteoma of the mandible: report of case and review of the literature. *Oral Surg Oral Med Oral Pathol Oral Radiol.* 2013;116(2):e134–140–e140. <https://doi.org/10.1016/j.oooo.2013.04.010>
- Karandikar S, Thakur G, Tijare M et al. Osteoid osteoma of mandible. *BMJ Case Rep.* 2011;2011(dec05 1):bcr1020114886–bcr1020114886. <https://doi.org/10.1136/bcr.10.2011.4886>

How to cite this article:

Ozel MA, Ogul H. Osteoid osteoma: an unusual neoplasm of the mandibular condyle. *Br J Hosp Med.* 2022. <https://doi.org/10.12968/hmed.2021.0592>