

## Metastatic breast cancer in the uterine cervix

Ayşe Arı<sup>1</sup>

Emine Uysal<sup>1</sup>

Halil Özer<sup>1</sup>

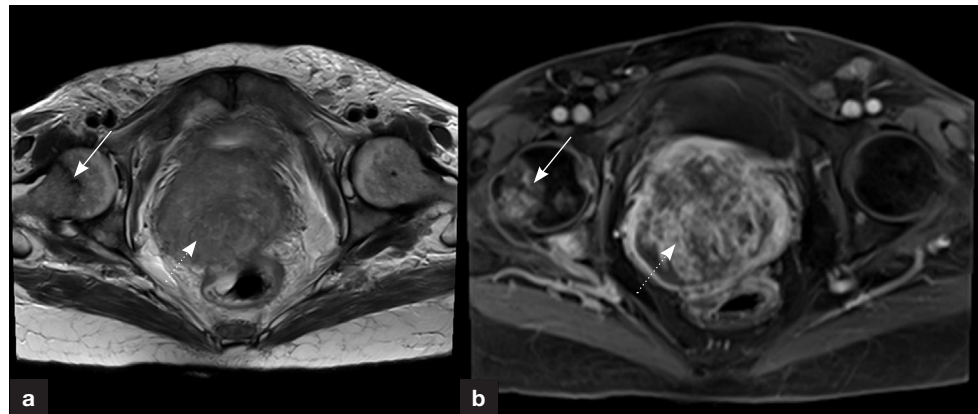
Abidin Kılınçer<sup>1</sup>

Author details can be found  
at the end of this article

Correspondence to:

Ayşe Arı;  
drayse1993@gmail.com

A 42-year-old woman was diagnosed with invasive breast carcinoma. She had experienced low back pain, so lumbar magnetic resonance imaging was performed, which showed a tumour in the uterine cervix. Pelvic magnetic resonance imaging was then performed, which showed a bulky cervical mass, enhanced on T1-weighted image, extending downward into the vagina. Metastatic lesions with a similar contrasting pattern were detected in the bone (**Figures 1a** and **b**). Cervical biopsies revealed this to be metastatic breast cancer.



**Figure 1.** a. Axial T2-weighted and (b) gadolinium-enhanced T1-weighted magnetic resonance images showing a cervical mass lesion enhanced after contrast medium (dotted white arrow), and enhanced metastatic mass lesions in the right femoral neck (solid white arrow).

Breast carcinoma usually metastasises to the lymph nodes, liver, bones, lungs or brain, and rarely involves the female genital tract. If seen, this tends to involve the ovary; the uterine cervix is only rarely involved (Bogliolo et al, 2010).

### Author details

<sup>1</sup>Department of Radiology, Faculty of Medicine, Selçuk University, Konya, Turkey

### Reference

Bogliolo S, Morotti M, Valenzano Menada M et al. Breast cancer with synchronous massive metastasis in the uterine cervix: a case report and review of the literature. *Arch Gynecol Obstet.* 2010;281(4):769–773. <https://doi.org/10.1007/s00404-009-1264-0>

### How to cite this article:

Arı A, Uysal E, Özer H, Kılınçer A. Metastatic breast cancer in the uterine cervix. *Br J Hosp Med.* 2023. <https://doi.org/10.12968/hmed.2023.0200>