

# Cutis verticis gyrata diagnosed via magnetic resonance imaging of the brain

Robert Harrington<sup>1</sup>

Sherok Hegazy<sup>1</sup>

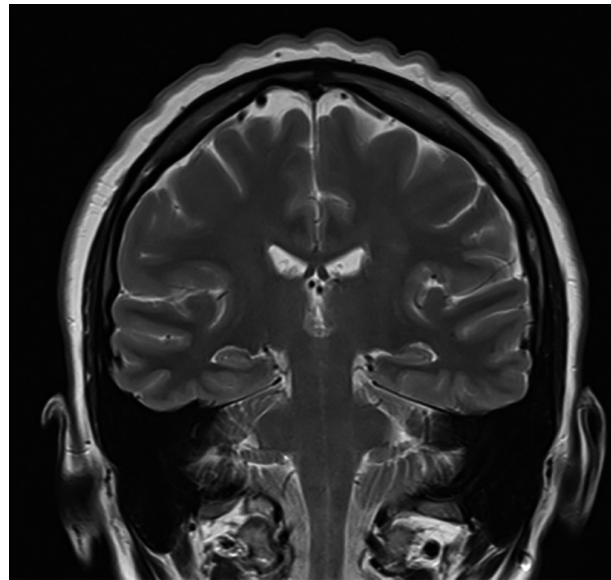
Eilis NicDhonncha<sup>1</sup>

Author details can be found at the end of this article

**Correspondence to:**

Robert Harrington;  
harringtonrob88@gmail.com

A 42-year-old woman was referred to the dermatology department by neurology with a wrinkled scalp that was noticed on magnetic resonance imaging of the brain. The magnetic resonance imaging (Figure 1) had been performed for monitoring of stable multiple sclerosis, and the skin changes were noticed incidentally. The patient reported first noticing nodularity of her scalp approximately 7 years before presentation. On examination, deeply furrowed skin folds were palpable throughout her scalp as well as erythematous scaly plaques which were clinically consistent with psoriasis. Cutis verticis gyrata secondary to psoriasis was diagnosed and the patient responded well to topical steroids.



**Figure 1.** T2-weighted magnetic resonance imaging showing folds and deep furrows in the scalp.

Cutis verticis gyrata is a rare scalp condition characterised by convoluted folds and deep furrows in the skin of the scalp. It can be caused by acromegaly, birthmarks and dermatoses. Clinically, the changes to this patient's scalp were not visible through her hair, and the abnormality was first noticed incidentally on magnetic resonance imaging. This case highlights the importance of thorough analysis of radiological images.

**Author details**

<sup>1</sup>Department of Dermatology, University Hospital Galway, Galway, Ireland

**How to cite this article:**

Harrington R, Hegazy S, NicDhonncha E. Cutis verticis gyrata diagnosed via magnetic resonance imaging of the brain. *Br J Hosp Med.* 2023. <https://doi.org/10.12968/hmed.2023.0250>