

Chronic ectopic pregnancy: magnetic resonance imaging diagnosis

Mustafa Kemal Demir¹

ORCID: 0000-0002-7023-6153

Ozge Ecertastan²

ORCID: 0000-0001-5957-0946

Tolga Taşci³

ORCID: 0000-0001-8645-4385

Okan Akinci⁴

ORCID: 0000-0002-9647-7262

Author details can be found at the end of this article

Correspondence: Mustafa Kemal Demir; demir.m.k@gmail.com

Magnetic resonance imaging (MRI) was recommended for a 34-year-old woman who had a right adnexal haemorrhagic lump on an ultrasonography examination. The patient had been complaining of pelvic pain and vaginal bleeding for four weeks. Laboratory results included an initial level of serum β -Human Chorionic Gonadotropin (HCG) of 4000 mIU/ML. At the first follow-up control, it dropped to a level of 438 mIU/ML before finally falling to a level of 7.3 mIU/ML. A right adnexal complex mass that resembled a gestational sac was seen on an MRI. On T1-weighted images, subacute haemorrhage resulted in a hyperintense haematocoele. Inside was a hypointense yolk sac (**Figure 1**). A laparoscopy revealed a tubal pregnancy and was treated with a right salpingo-oophorectomy (**Figure 2**).

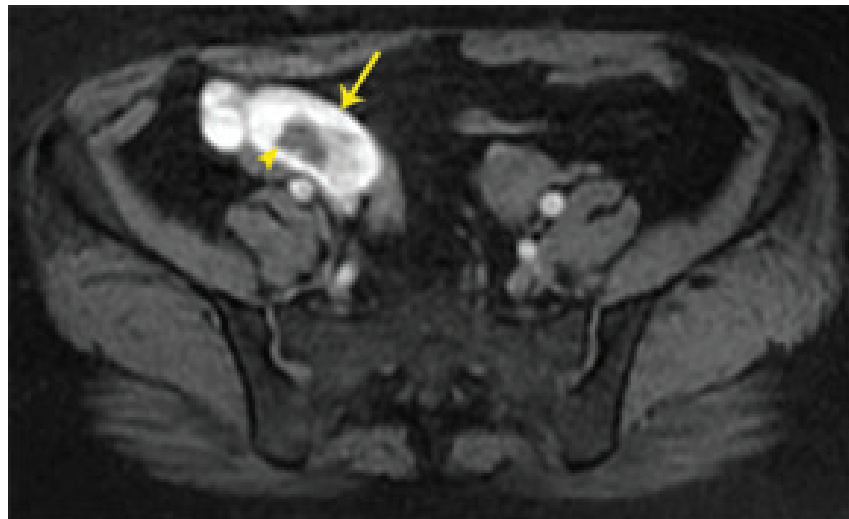


Figure 1. Magnetic resonance imaging (MRI) of the chronic ectopic pregnancy. Axial T1-weighted image shows a haematocoele that contains a hyperintense subacute haematoma (arrow) surrounding the hypointense yolk sac (arrowhead).

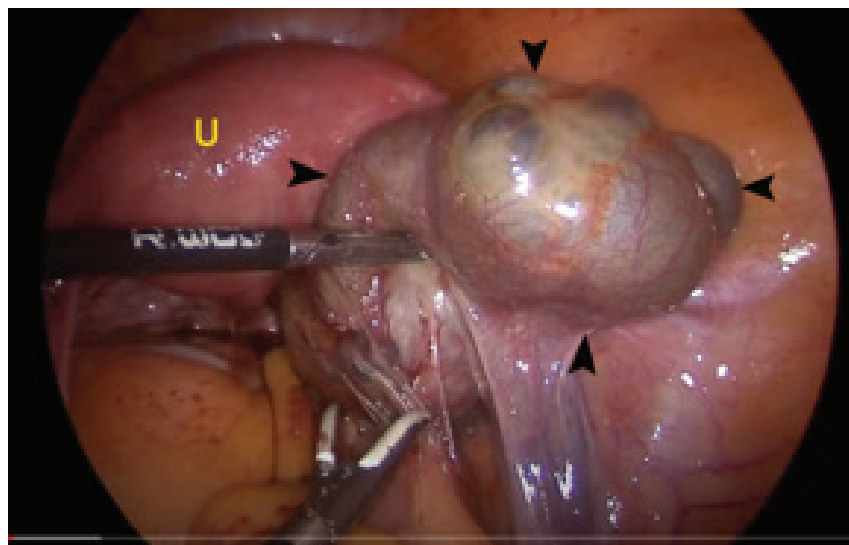


Figure 2. Laparoscopic view of the mass (arrowheads). U: Uterus.

How to cite this article:

Demir MK, Ecertastan O, Taşci T, Akinci O. Chronic ectopic pregnancy: magnetic resonance imaging diagnosis. *Br J Hosp Med.* 2024. <https://doi.org/10.12968/hmed.2023.0397>

MRI findings of the disease include an absence of intrauterine pregnancy, adnexal haematocele, gestational sac, and yolk sac, in addition to the relevant clinical and laboratory results (Nacharaju et al, 2014; Tempfer et al, 2019). Laparoscopic salpingectomy is the preferred treatment.

Author details

¹Department of Radiology, Bahçeşehir University Göztepe Medical Park Hospital, Istanbul, Turkey

²Department of Radiology, Bahçeşehir University School of Medicine, Kadıköy, Istanbul, Turkey

³Department of Obstetrics & Gynecology, Bahçeşehir University School of Medicine, Göztepe Medical Park Hospital, Istanbul, Turkey

⁴Department of Radiology, Health Sciences University, Haydarpaşa Numune Training and Research Hospital, Uskudar, Istanbul, Turkey

References

- Nacharaju M, Vellanki VS, Gillellamudi SB, Kotha VK, Alluri A. A rare case of chronic ectopic pregnancy presenting as large hematosalpinx. *Clin Med Insights, Reprod Health*. 2014;8:CMRH.S13110–4. <https://doi.org/10.4137/CMRH.S13110>
- Tempfer CB, Dogan A, Tischoff I, Hilal Z, Rezniczek GA. Chronic ectopic pregnancy: case report and systematic review of the literature. *Arch Gynecol Obstet*. 2019;300(3):651–660. <https://doi.org/10.1007/s00404-019-05240-7>