

Center for Drug Discovery¹, University of Florida, Gainesville, FL; Diabetes Research Institute² and Department of Molecular and Cellular Pharmacology³, University of Miami, Miami, FL, USA

Recent advances in retrometabolic drug design (RMDD) and development

N. BODOR¹, P. BUCHWALD^{2,3}

Received January 18, 2010, accepted February 26, 2010

Prof. Nicholas Bodor, Center for Drug Discovery, University of Florida, Health Science Center, P.O. Box 100497, Gainesville, FL 32610-0497, USA
nsbodor@gmail.com

Pharmazie 65: 395–403 (2010)

doi: 10.1691/ph.2010.0523R

As a general review for the 7th Retrometabolism-Based Drug Design and Targeting Conference, recent developments within this field are briefly reviewed with various illustrative examples from different therapeutic areas. Retrometabolic drug design incorporates two major systematic approaches: the design of soft drugs and of chemical delivery systems (CDS). Both aim to design new, safe drugs with an improved therapeutic index by integrating structure-activity and structure-metabolism relationships; however, they achieve it by different means: whereas soft drugs are new, active therapeutic agents that undergo predictable metabolism to inactive metabolites after exerting their desired therapeutic effect, CDSs are biologically inert molecules that provide enhanced and targeted delivery of an active drug to a particular organ or site through a designed sequential metabolism that involves several steps.

1. Introduction

Although the drug discovery and development processes have significantly advanced by increasing insight into the molecular/biochemical mechanisms of drug action and by improved and accelerated screening technologies and lead selection methods, the number of approved new chemical entities (NCE) has not increased accordingly. This lack of success underlines the still limited understanding of what makes a good drug, but also the increasing developmental problems caused by stringent regulations. There are still too many “me too” drugs being developed just through limited modifications of known drugs. Highly touted new technologies, such as combinatorial chemistry and high-throughput screening (HTS), still have had no significant impact (Proudfoot 2002). Not enough emphasis is put on the safety issues. This important component is addressed by retrometabolic drug design (RMDD) approaches, a general concept directed toward the design of improved therapeutic index ($TI = TD_{50} / ED_{50}$), which is a reflection of the degree of selectivity or margin of safety. This type of design diverts the metabolism of the drugs to novel, non-toxic pathways avoiding the formation of toxic metabolites. With RMDD, metabolism does not just happen, but the metabolic route is imposed on the new drug by design. As is well known, RMDD involves two basic directions: soft drugs (SD) and targeted chemical delivery systems (CDS).

2. Soft drug examples and recent developments

The soft drug concept was introduced during the 1970s (Bodor 1977, 1982, 1984), and since then it has been applied by many research groups in a large number of therapeutic areas. Comprehensive reviews of all major aspects have been published (Bodor and Buchwald 2000, 2003b). Our laboratory focused mainly on the design of soft corticosteroids (e.g., loteprednol etabonate,

etiprednol dicloacetate) (Bodor and Buchwald 2006c), soft β -blockers (e.g., adaprolol) (Bodor and Buchwald 2005), and soft anticholinergics (e.g., tematropium) (Kumar and Bodor 1996). Detailed quantitative structure-activity relationships were developed in these drug classes (Buchwald 2007a, 2008; Buchwald and Bodor 2002, 2004, 2006) by taking into account, among other things, the size-related effects through a bilinear LinBiExp model (Buchwald 2005, 2007b). A number of soft drug approaches both by our laboratories and by many others already resulted in marketed drugs such as, for example, esmolol and landiolol, soft β -blockers containing easily hydrolyzable ester functions (Fig. 1), or remifentanyl, a soft opioid analgesic based on carfentanyl (Fig. 2). Some therapeutic compounds can also be considered as “accidental” soft drugs, i.e., drugs that are, in fact, soft drugs even though they were not intentionally designed as such. For example, methylphenidate, a methyl ester containing piperidine derivative that is structurally related to amphetamine (Fig. 3), which is widely used for the treatment of attention-deficit-hyperactivity disorder (ADHD). As a methyl ester, it is easily hydrolyzed (Markowitz et al. 2000) to the inactive (Patrick et al. 1981) acidic metabolite (ritalinic acid). Thus, methylphenidate can be considered a safe, soft drug, which is why it is used extensively in pediatric patients. Soft drug design approaches are widely used in both industrial and academic settings. Some more interesting developments include:

1. Soft estradiol analogs developed by Labaree and co-workers at Yale University (Fig. 4) (Labaree et al. 2001, 2003). These compounds, while estrogenic, can be used locally for the treatment of vaginal dyspareunia, but are void of systemic estrogenic activity, due to their facile hydrolytic deactivation.
2. Hydrolyzable ester containing soft cyclosporin analogs (Fig. 5) explored at Enanta (Lazarova et al. 2003) for the treatment of autoimmune disorders.

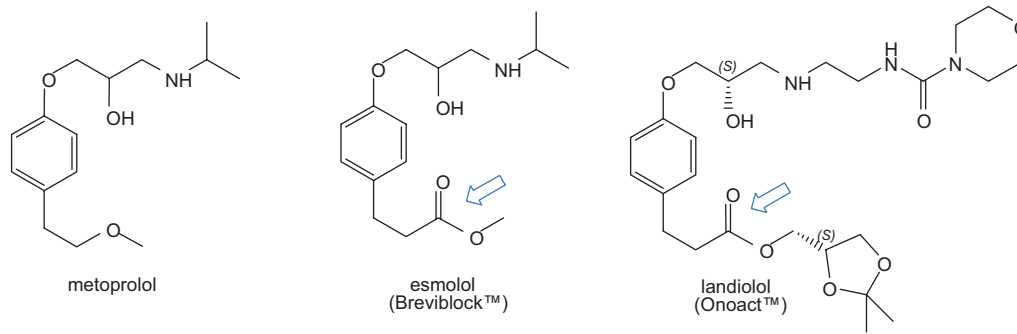


Fig. 1: Soft β -blockers. The deactivating ester functions are structurally removed from the pharmacophore

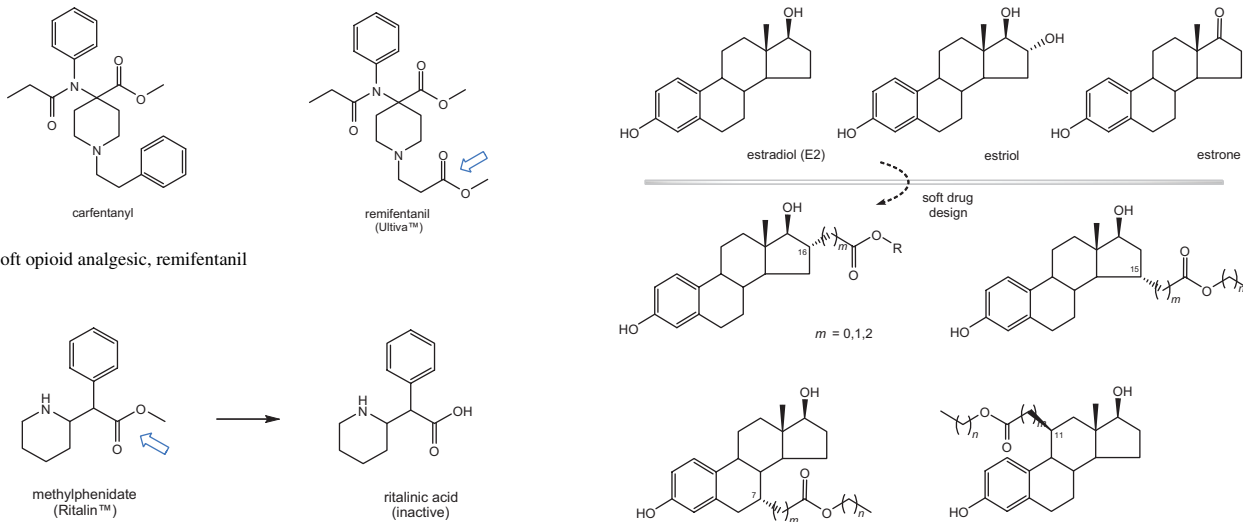


Fig. 2: Soft opioid analgesic, remifentanyl

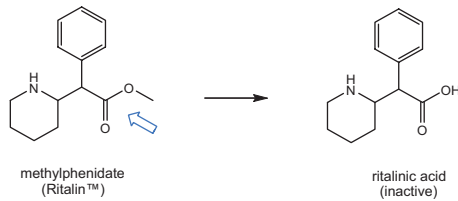


Fig. 3: Methylphenidate and its inactive metabolite, ritalinic acid

Fig. 4: Soft estradiol analogs

- Soft tacrolimus analogs (Fig. 6) (e.g., MLD987) investigated at Novartis (Hersperger et al. 2004) for inhalation treatment of asthma.
- Novel soft cytokine (Fig. 7) analogs developed at Janssen (Freyne et al. 2005) for inhalation therapy of asthma.
- Some locally acting soft benzodiazepine analogs (CNS7259X, CNS7056) of midazolam and bromazepam, developed at GlaxoSmithKline (Fig. 8) (Kilpatrick et al. 2007; Kilpatrick and Tilbrook 2006; Pacofsky et al 2002; Stafford et al. 2002).
- Intended soft mometasone furoate analogs (Fig. 9) investigated at Novartis (Sandham et al. 2004) that, however, did not fulfill expectations as the highly hindered 17 β -esters did not hydrolyze to the predicted inactive acidic metabolite.

- A similarly positioned thioester in fluticasone propionate undergoes oxidative and not hydrolytic ester cleavage.
- Soft amiodarone analogs (Fig. 10) for the treatment of atrial fibrillation were developed by Aryx Therapeutics (Arya et al. 2009; Morey et al. 2001; Raatikainen et al. 2000) using the dedicated software “Computer Assisted Soft Drug Design” (Bodor et al. 1998a) licensed from the University of Florida. Recent Phase II clinical studies demonstrated the superior safety profile of budiodarone (ATI-2042) as compared to amiodarone.
- Soft cisapride analogs (e.g., ATI-7505) were also developed at Aryx Therapeutics (Fig. 11) and they also demonstrated improved activity and safety in clinical trials for gastroparesis (Camilleri et al. 2007).

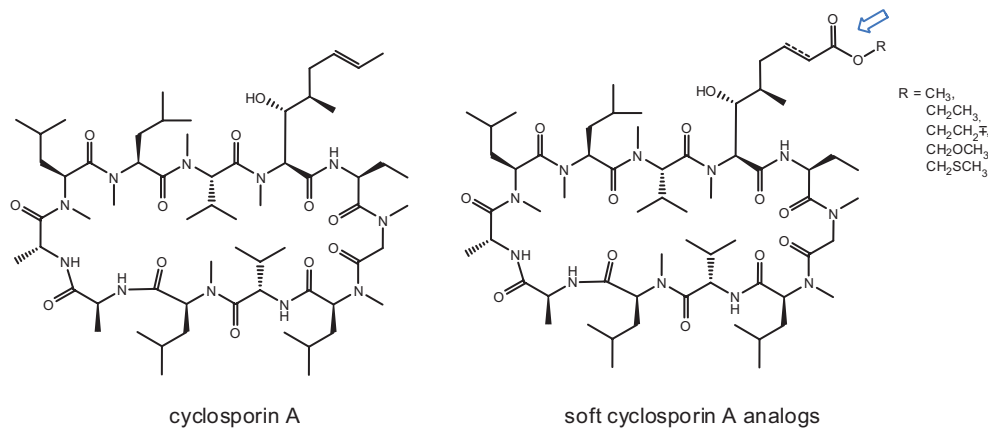


Fig. 5: Soft cyclosporin A analogs

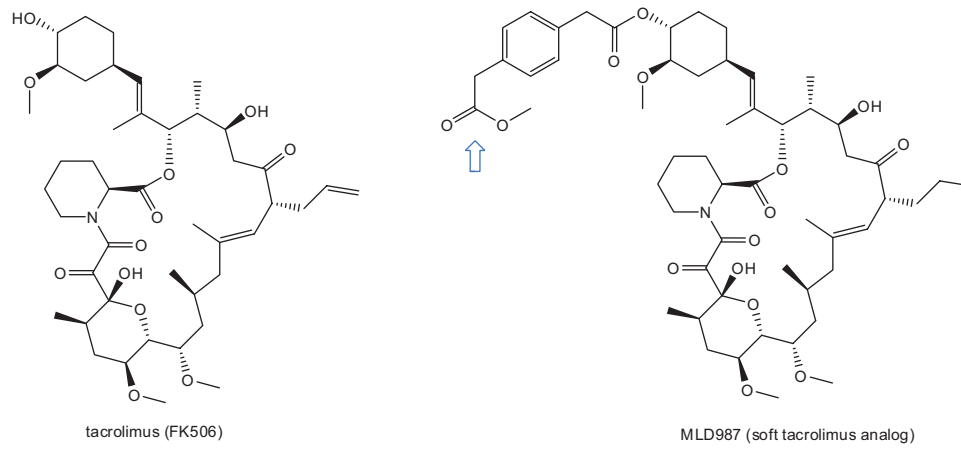


Fig. 6: Soft tacrolimus analog MLD987

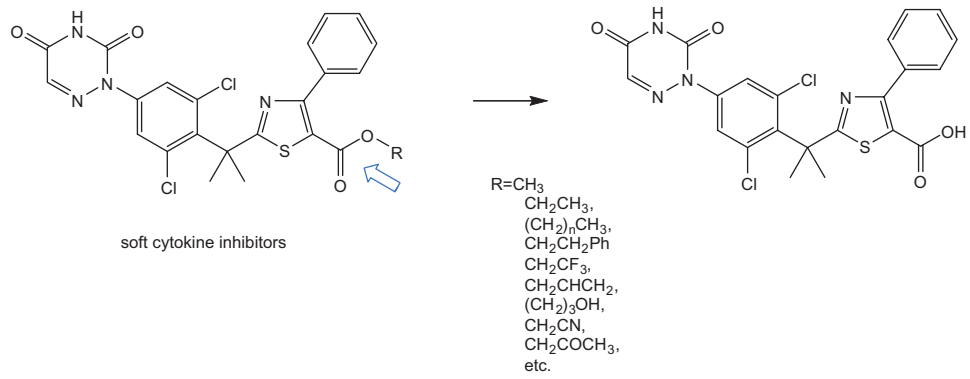


Fig. 7: Soft cytokine inhibitors

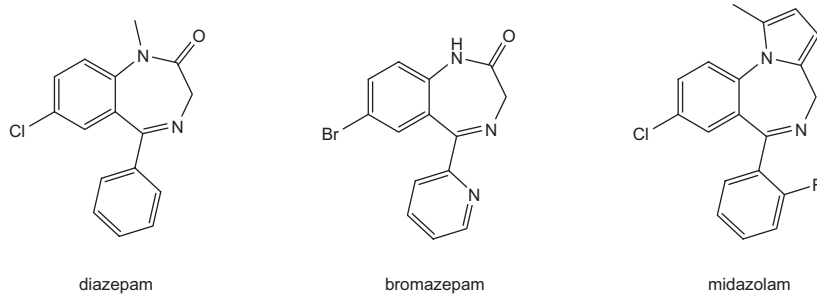
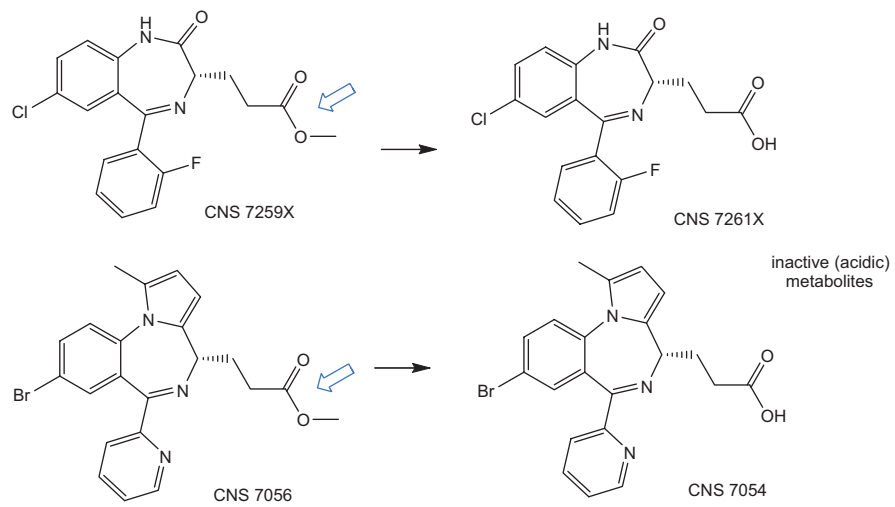


Fig. 8: Soft benzodiazepines, their inactive metabolites, and representative benzodiazepine structures

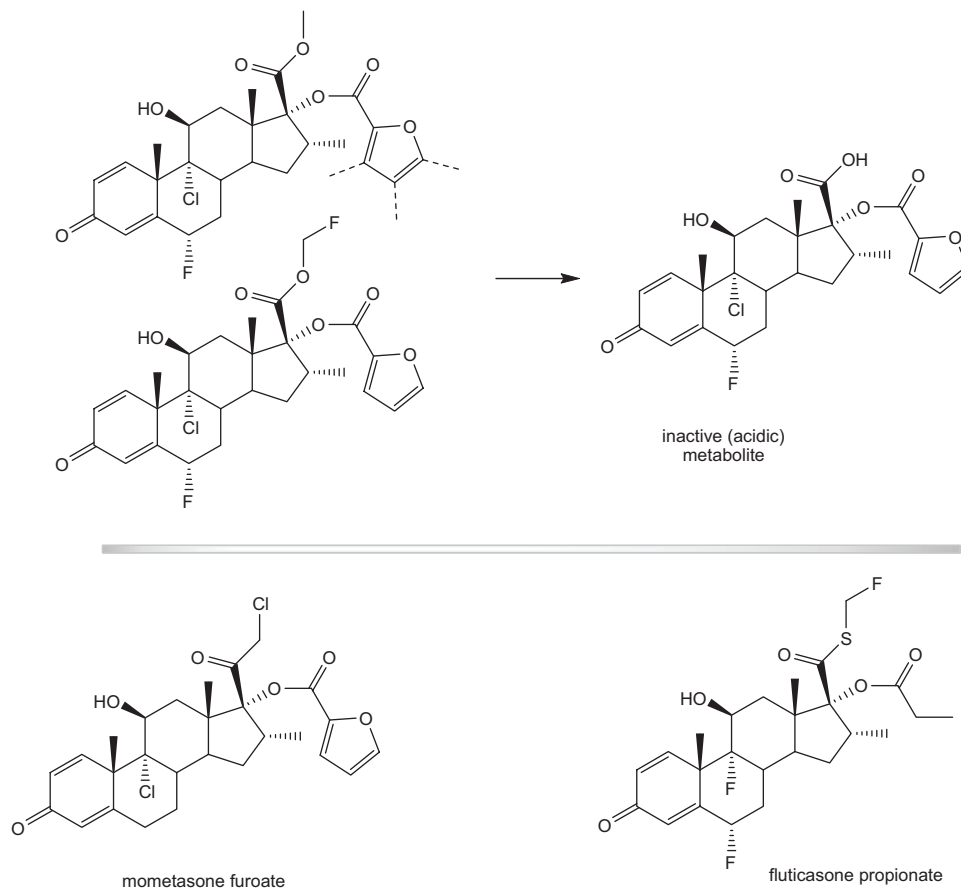


Fig. 9: Soft mometasone furoate analogs, their expected inactive metabolite, and related glucocorticoid structures (mometasone furoate and fluticasone propionate)

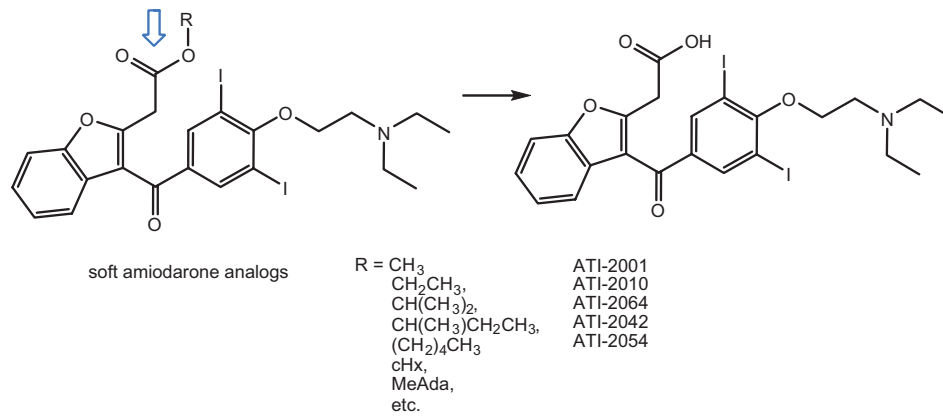


Fig. 10: Soft amiodarone analogs

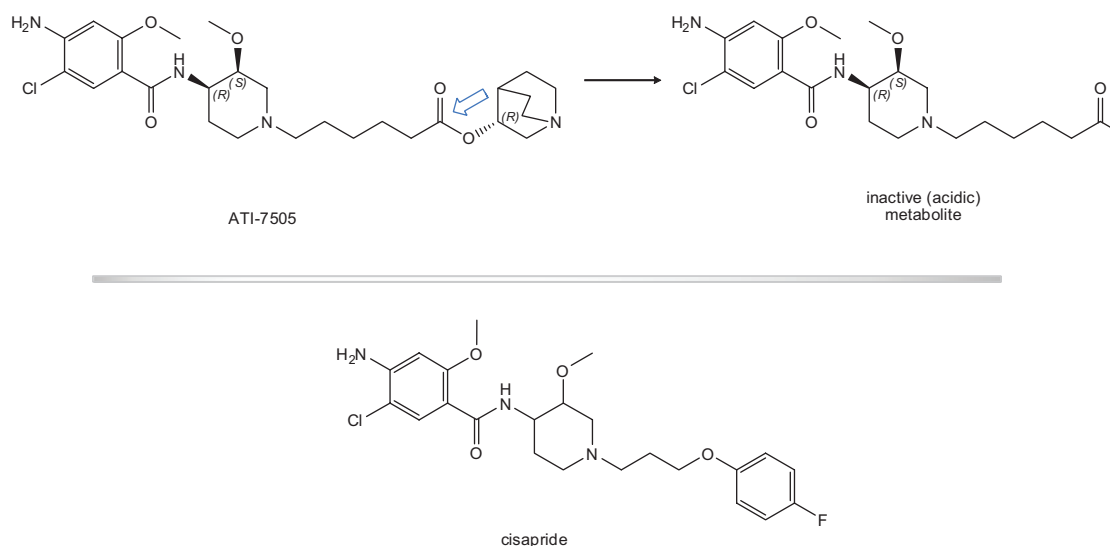


Fig. 11: Soft gastro-prokinetics based on cisapride

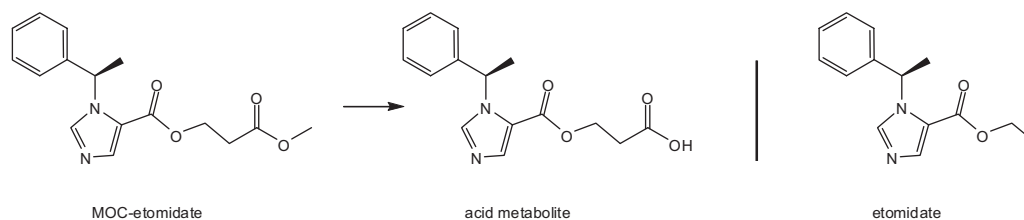


Fig. 12: MOC-etomidate, a soft analog of etomidate, and its inactive acid metabolite

9. The soft drug approach was recently applied in the field of anesthesiology (Cotten et al. 2009). Etomidate, an imidazol-carboxyester type anesthetic is the agent of choice for use in critically ill patients. However, it causes prolonged suppression of adrenocortisol steroid synthesis; consequently, its clinical utility and safety are limited. A soft analog MOC-etomidate, (*R*)-3-methoxy-3-oxopropyl-(1-phenylethyl)-1*H*-imidazole-5-carboxylate (Fig. 12), was strategically designed to undergo ultra-rapid metabolism by esterases. Indeed, the soft analog was metabolized with a half-life of 15.4 min in human liver S9 fraction, while etomidate did not show any significant hydrolysis in 1 hour. MOC-etomidate was effective as a hypnotic, but at equipotent doses of i.v. bolus, its soft analog was ultra-short acting: its duration of activity was one order of magnitude lower than that of etomidate (2.8 ± 0.4 min vs. 27 ± 7 min). On the other hand, MOC-etomidate produced no reduction in the adrenocortical steroid production, whereas an equipotent dose of etomidate produced a statistically significant reduction. The acidic metabolite is inactive. An accompanying editorial (Egan 2009) emphasized: “Although the terminology is new, soft drug success stories in anesthesiology date back many years. Perhaps the modern prototype example is

the short-acting opioid remifentanyl. [...] MOC-etomidate is the latest example of a novel soft drug under investigation within anesthesiology. [...] The advance of soft drugs [...] has made it increasingly possible for us to fulfill the magic switch fantasy. [...] the concept certainly makes more precise and accurate titration of anesthetic effect possible. With the soft drug trend clearly established, it can be said that anesthesia is going soft, and it's a good thing.”

10. The field of antiinflammatory corticosteroids provides one of the most successful areas for soft drug design (Bodor 1999; Bodor and Buchwald. 2006c). Traditional corticosteroids are very useful drugs because of their ability to exert intense biological effects in almost any organ. They also tend to have multiple adverse effects that seriously limit their usefulness. Not surprisingly, the glucocorticoid receptor represents the target with the most number of approved drugs (together with the histamine H₁ receptor) (Overington et al. 2006). Systemic side effects include, for example, weight gain, fat redistribution, insulin resistance, myopathy, osteoporosis, hypertension, increased intraocular pressure, growth inhibition, and others. Soft drug approaches are particularly well suited for this area and especially for the design of novel inhaled, intranasal, or topically applied

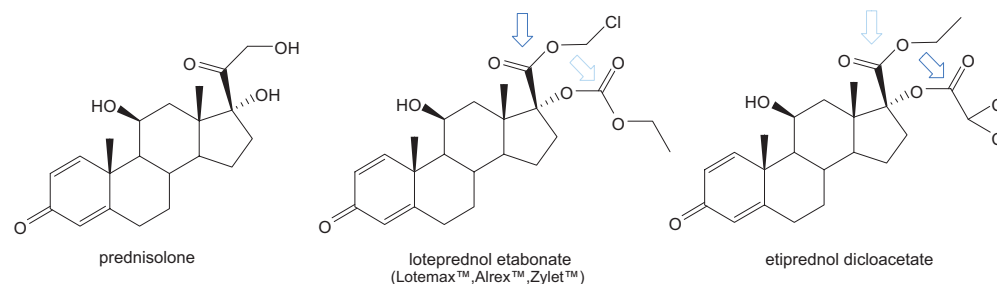


Fig. 13: Two soft steroids, loteprednol etabonate and etiprednol dicloacetate, derived from prednisolone

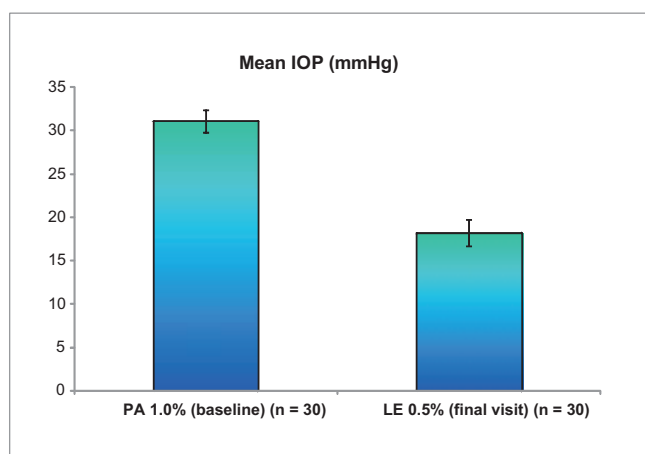


Fig. 14: Mean intraocular pressure (IOP) values of post-corneal transplant patients treated with prednisolone acetate (PA) and after switching to loteprednol etabonate (LE)

corticosteroids. However, to successfully separate the desired local activity from systemic toxicity, it is important to reach an adequate balance between activity/distribution and rate of metabolic deactivation. We followed a classic inactive metabolite-based soft drug approach with corticoid acid, a known inactive metabolite of hydrocortisone, as lead. Starting from this structure, more than 120 first-generation soft steroids have been synthesized by modifications of the 17β ester function and the 17α hydroxy function, together with other changes (introduction of $\Delta^{1,2}$, fluorination at 6α and/or 9α , methylation at 16α or 16β). From these first generation soft analogs, *loteprednol etabonate* (LE, Fig. 13), an analog of prednisolone, has been selected for clinical development on the basis of various considerations including therapeutic index, synthetic availability, and “softness” (the rate and easiness of metabolic deactivation). LE is a safe and effective treatment for seasonal allergic conjunctivitis, post-operative inflammation, contact lens-associated GPC, or uveitis (Howes 2000; Ilyas et al. 2004; Noble and Goa 1998). A very recent paper (Holland et al. 2009) further demonstrates the outstanding safety profile of LE. In these studies, thirty “steroid sensitive” patients who have undergone corneal transplantation were treated, as usual, with prednisolone acetate. This treatment caused an average elevation of intraocular pressure (IOP) to 31.1 mmHg. Increased IOP after corneal transplant can lead to irreversible vision loss through optic nerve damage. For this reason, the patients were switched to LE (Lotemax™). The IOP in all cases was reduced during the 21 weeks treatment to an average of 18.2 mmHg (Fig. 14). It was concluded that switching to loteprednol etabonate from prednisolone acetate in known steroid responders was successful in reducing IOP and did not increase the risk of allograft rejection.

3. Chemical delivery systems

On the other side of retrometabolic design, CDS approaches provide novel, systematic methodologies for targeting active biological molecules to specific target sites or organs based on predictable, multistep enzymatic activation (Bodor and Brewster 1991; Bodor and Buchwald 1997a, 1999). The bioremovable moieties attached to the drug that is the subject of targeted delivery include a *targetor* (T) moiety, which has to achieve the site-specific targeting, and (optional) *modifier functions* ($F_1...F_n$), which serve as lipophilizers, protect certain functions, or fine-tune the necessary molecular properties to prevent

premature, unwanted metabolic conversions. The two main classes are represented by the enzymatic physical-chemical-based CDSs, which exploit site-specific traffic properties by sequential metabolic conversions that result in considerably altered transport properties and are used for brain-targeting, and by site-specific enzyme-activated CDSs, which exploit specific enzymes found primarily, exclusively, or at higher activity at the site of action and are used for ocular-targeting.

The brain-targeting redox-type CDS was highly successful in targeting drugs (D) to the brain by exploiting the differential bidirectional movement through the blood-brain barrier (BBB) of a lipophilic dihydrotrigonelline–D construct allowing “lock-in” of the hydrophilic trigonelline⁺–D in the brain. The positively charged oxidized drug precursor accumulates behind the BBB allowing sustained local release of D and sparing in the same time the whole body from the drug (Bodor and Brewster 1991; Bodor and Buchwald 1997a; Bodor et al. 1975). Among CDS approaches explored to date (Bodor and Buchwald 2003a), estradiol CDS (E_2 -CDS) is in the most advanced investigation stage: it has completed Phase I/II studies with a new buccal formulation (Bodor and Buchwald 2006a).

Recently, a group of French researchers (Foucout et al. 2009) have successfully applied our formerly introduced (Bodor et al. 2002) dihydroquinoline \rightleftharpoons quinolinium targetor system for GABA: the lipophilic DHQ–D penetrates the BBB, and oxidation locks in the Q^+ –D precursor (Fig. 15) (Foucout et al. 2009). Further, a modified targetor was reported by Hassan et al. (2009). The 1-malonyl-1,4-dihydropyridine \rightleftharpoons pyridinium moiety was successfully applied for brain targeting (Hassan et al. 2009).

4. Molecular packaging

The CDS approach has also been extended to achieve successful brain deliveries of neuropeptides such as Leu-enkephalin, thyrotropin-releasing hormone (TRH), and kyotorphin analogs (Bodor and Buchwald 1999; Bodor and Buchwald 2003b; Bodor et al. 1992; Chen et al. 1998; Wu et al. 2002). Brain delivery of peptides is particularly difficult because of their rapid metabolic degradation by peptidases and their often unfavorable lipophilicity profile (Bodor and Buchwald 2006b). Therefore, the successful brain delivery of peptides requires three issues to be solved simultaneously: enhance passive transport by increasing the lipophilicity, ensure enzymatic stability to prevent premature degradation, and exploit the lock-in mechanism to provide targeting. This has been achieved with a complex *molecular packaging* strategy, in which the peptide unit is part of a bulky molecule dominated by lipophilic modifying groups (L) that direct BBB penetration and prevent recognition by peptidases (Fig. 16). The efficacy of the CDS package was strongly influenced by modifications of the spacer (S) moiety, which consisted of strategically used amino acids that ensured the timely removal of the charged targetor from the peptide, and the lipophilic (L) moiety. The bulkier cholesteryl group used as L showed a better efficacy than the smaller adamantane-ethyl, but the spacer (S) function turned out to be the most important factor for manipulating the rate of peptide release and pharmacological activity: proline, proline-proline, or proline-alanine spacers produced the best *in vivo* pharmacological effects. *Brain-targeting redox analogs* (BTRAs), in which the targetor moiety is not attached to the peptide from outside, but is integrated within novel *redox* amino acid building blocks (Bodor 1997) that replace the original basic amino acid of the active peptide, have also been explored for kyotorphin and its analogs (Chen et al. 1998) as well as for TRH in a copycat design (Prokai-Tatrai et al. 2002; Prokai et al. 2004) (Fig. 17).

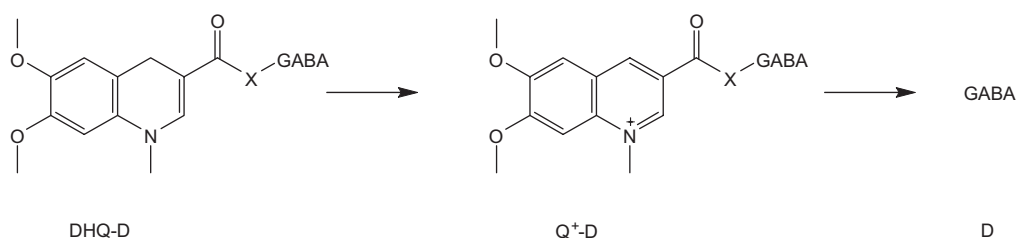


Fig. 15: The dihydroquinoline \rightleftharpoons quinolinium redox targetor system as applied to GABA

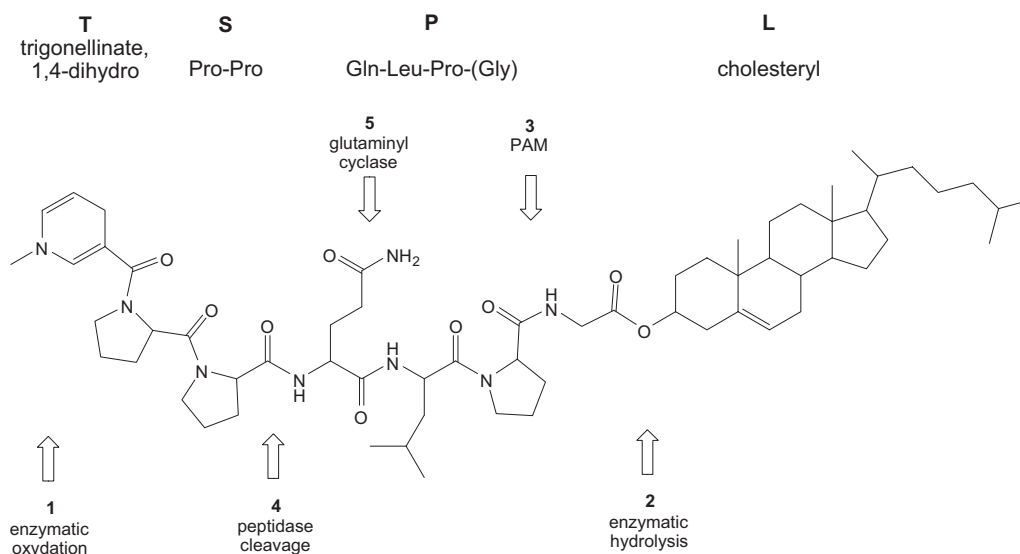


Fig. 16: The peptide brain targeting molecular package construct as applied to TRH

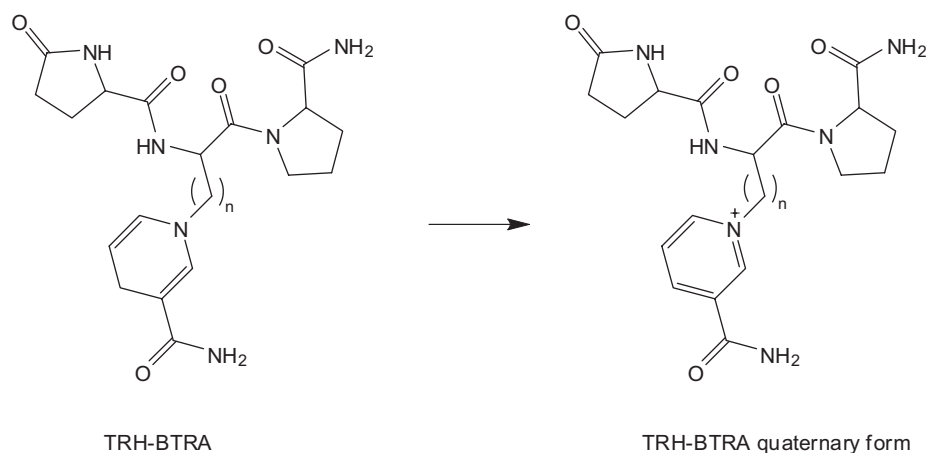


Fig. 17: The brain-targeted redox analogs (BTRA) of TRH

On the other hand, former junior associates of the Center for Drug Discovery at the University of Florida continue to attempt to hijack the original brain targeting concept based on differential sequential metabolism of dihydropyridine \rightleftharpoons pyridinium targetor system constructs (Bodor 1997; Bodor et al. 1992) by breaking up the necessary sequence into prodrugs and other units, renaming the original components. For example, the “targetor” is renamed (improperly) as “transport moiety”, the “spacer(s)” as “scissile linkers” (Prokai-Tatrai et al. 2008; Prokai-Tatrai and Prokai 2009), and the “brain-targeted redox analog (BTRA)” (Chen et al. 1998) based on ‘redox amino acids’ (Bodor 1997) as “prodrug-amenable analog” (Prokai-Tatrai and Prokai 2009). They also compare the *in silico* predictions for log *P* values with three different methods, including BLOGP (Bodor et al. 1989) and QLogP (Bodor and Buchwald 1997b), concluding that they “displayed a great array of unrealistic discrepancies within and among the methods” (Prokai-Tatrai and Prokai 2009)

and that they were “uninterpretable for the compounds involved in this study” mainly because they “consistently predicted the pyridinium compounds (...) to be significantly more lipophilic than the corresponding 1,4-dihydropyridines” (Prokai et al. 2004). However, part of this is because they are using unauthorized software ignoring the existence of updated versions that accurately predict the lipophilicity of peptides (Buchwald and Bodor 1998), even for those that contain the unique dihydropyridine \rightleftharpoons pyridinium redox components where there is a large change of several log units (Bodor et al. 1998b, 1999).

5. Conclusion

In conclusion, retrometabolic approaches incorporate two drug design approaches, the soft drugs and CDSs. These achieve their drug targeting roles in opposite ways, but they both rely on

designed metabolism to control drug distribution and action and to increase safety. These approaches are general in nature, and the corresponding specific design principles can be applied to essentially all drug classes.

Acknowledgements: This paper was partially presented during the 7th Conference on Retrometabolism-Based Drug Design and Targeting, May 10–13, 2007, Orlando, Florida, USA.

References

- Arya A, Silberbauer J, Teichman SL, Milner P, Sulke N, Camm AJ (2009) A preliminary assessment of the effects of ATI-2042 in subjects with paroxysmal atrial fibrillation using implanted pacemaker methodology. *Europace* 11: 458–464.
- Bodor N (1977) Novel approaches for the design of membrane transport properties of drugs. In: Roche EB (ed), *Design of Biopharmaceutical Properties through Prodrugs and Analogs*. Washington, D.C.: Academy of Pharmaceutical Sciences, pp. 98–135.
- Bodor N (1982) Designing safer drugs based on the soft drug approach. *Trends Pharmacol Sci* 3: 53–56.
- Bodor N (1984) Soft drugs: principles and methods for the design of safe drugs. *Med Res Rev* 3: 449–469.
- Bodor N (1997) Redox amino acids and peptides containing them. US Patent 5,639,885.
- Bodor N (1999) Androstene derivatives. U.S. Patent 5,981,517.
- Bodor N, Brewster ME (1991) Chemical delivery systems. In: Juliano RL (ed), *Targeted Drug Delivery*, Vol 100. Berlin: Springer, pp. 231–284.
- Bodor N, Buchwald P (1997a) Drug targeting via retrometabolic approaches. *Pharmacol Ther* 76: 1–27.
- Bodor N, Buchwald P (1997b) Molecular size based approach to estimate partition properties for organic solutes. *J Phys Chem B* 101: 3404–3412.
- Bodor N, Buchwald P (1999) Recent advances in the brain targeting of neuropharmaceuticals by chemical delivery systems. *Adv Drug Deliv Rev* 36: 229–254.
- Bodor N, Buchwald P (2000) Soft drug design: general principles and recent applications. *Med Res Rev* 20: 58–101.
- Bodor N, Buchwald P (2003a) Brain-targeted delivery: experiences to date. *Am J Drug Deliv* 1: 13–26.
- Bodor N, Buchwald P (2003b) Retrometabolism-based drug design and targeting. In: Abraham DJ (ed), *Burger's Medicinal Chemistry and Drug Discovery*. Vol. 2, Drug Discovery and Drug Development, 6th Edition, New York: Wiley, pp. 533–608.
- Bodor N, Buchwald P (2005) Ophthalmic drug design based on the metabolic activity of the eye: soft drugs and chemical delivery systems. *AAPS J*. 7: article 79 (E820–E833).
- Bodor N, Buchwald P (2006a) Brain-targeted delivery of estradiol: therapeutic potential and results obtained with a chemical delivery system approach. *Am J Drug Deliv* 4: 161–175.
- Bodor N, Buchwald P (2006b) Brain-targeted delivery of peptides. *Am Pharm Rev* 9: 100–104.
- Bodor N, Buchwald P (2006c) Corticosteroid design for the treatment of asthma: structural insights and the therapeutic potential of soft corticosteroids. *Curr Pharm Des* 12: 3241–3260.
- Bodor N, Buchwald P, Huang M-J (1998a) Computer-aided soft drug design. Computer software, Copyright University of Florida. Gainesville, FL.
- Bodor N, Buchwald P, Huang M-J (1998b) Computer-assisted design of new drugs based on retrometabolic concepts. *SAR QSAR Environ Res* 8: 41–92.
- Bodor N, Buchwald P, Huang M-J (1999) The role of computational techniques in retrometabolic drug design strategies. In: Leszczynski J (ed), *Computational Molecular Biology*. Amsterdam: Elsevier, pp. 569–618.
- Bodor N, Farag HH, Barros MDC, Wu W-M, Buchwald P (2002) *In vitro* and *in vivo* evaluations of dihydroquinoline- and dihydroisoquinoline-based targetor moieties for brain-specific chemical delivery systems. *J Drug Targeting* 10: 63–71.
- Bodor N, Gabanyi Z, Wong C-K (1989) A new method for the estimation of partition coefficient. *J Am Chem Soc* 111: 3783–3786.
- Bodor N, Prokai L, Wu W-M, et al (1992) A strategy for delivering peptides into the central nervous system by sequential metabolism. *Science* 257: 1698–1700.
- Bodor N, Shek E, Higuchi T (1975) Delivery of a quaternary pyridinium salt across the blood-brain barrier by its dihydropyridine derivative. *Science* 190: 155–156.
- Buchwald P (2005) General linearized biexponential model for QSAR data showing bilinear-type distribution. *J Pharm Sci* 94: 2355–2379.
- Buchwald P (2007a) Computer-aided retrometabolic drug design: soft drugs. *Expert Opin Drug Discov* 2: 923–933.
- Buchwald P (2007b) A general bilinear model to describe growth or decline time-profiles. *Math Biosci* 205: 108–136.
- Buchwald P (2008) Glucocorticoid receptor binding: a biphasic dependence on molecular size as revealed by the bilinear LinBiExp model. *Steroids* 73: 193–208.
- Buchwald P, Bodor N (1998) Octanol-water partition of nonzwitterionic peptides: Predictive power of a molecular size-based model. *Proteins* 30: 86–99.
- Buchwald P, Bodor N (2002) Computer-aided drug design: the role of quantitative structure-property, structure-activity, and structure-metabolism relationships (QSPR, QSAR, QSMR). *Drugs Future* 27: 577–588.
- Buchwald P, Bodor N (2004) Soft glucocorticoid design: structural elements and physicochemical parameters determining receptor-binding affinity. *Pharmazie* 59: 396–404.
- Buchwald P, Bodor N (2006) Soft quaternary anticholinergics: comprehensive QSAR with a linearized biexponential (LinBiExp) model. *J Med Chem* 49: 883–891.
- Camilleri M, Vazquez-Roque MI, Burton D, et al (2007) Pharmacodynamic effects of a novel prokinetic 5-HT₄ receptor agonist, ATI-7505, in humans. *Neurogastroenterol Motil* 19: 30–38.
- Chen P, Bodor N, Wu W-M, Prokai L (1998) Strategies to target kyotorphin analogues to the brain. *J Med Chem* 41: 3773–3781.
- Cotten JF, Husain SS, Forman SA, et al (2009) Methoxycarbonyl-etomidate: a novel rapidly metabolized and ultra-short-acting etomidate analogue that does not produce prolonged adrenocortical suppression. *Anesthesiology* 111: 240–249.
- Egan TD (2009) Is anesthesiology going soft? *Trends in fragile pharmacology*. *Anesthesiology* 111: 229–230.
- Foucoult L, Gourand F, Dhilly M, et al (2009) Synthesis, radiosynthesis and biological evaluation of 1,4-dihydroquinoline derivatives as new carriers for specific brain delivery. *Org. Biomol Chem* 7: 3666–3673.
- Freyne EJ, Lacrampe JF, Deroose F, et al (2005) Synthesis and biological evaluation of 1,2,4-triazinylphenylalkylthiazolecarboxylic acid esters as cytokine-inhibiting antedugs with strong bronchodilating effects in an animal model of asthma. *J Med Chem* 48: 2167–2175.
- Hassan HA, Abdel-Aziz M, Abuo-Rahma Gel D, Farag HH (2009) 1-Malonyl-1,4-dihydropyridine as a novel carrier for specific delivery of drugs to the brain. *Bioorg Med Chem* 17: 1681–1692.
- Hersperger R, Buchheit K-H, Cammisuli S, et al (2004) A locally active antiinflammatory macrolide (MLD987) for inhalation therapy of asthma. *J Med Chem* 47: 4950–4957.
- Holland EJ, Djalilian AR, Sanderson JP (2009) Attenuation of ocular hypertension with the use of topical loteprednol etabonate 0.5% in steroid responders after corneal transplantation. *Cornea* 28: 1139–1143.
- Howes JF (2000) Loteprednol etabonate: a review of ophthalmic clinical studies. *Pharmazie* 55: 178–183.
- Ilyas H, Slonim CB, Braswell GR, Favetta JR, Schulman M (2004) Long-term safety of loteprednol etabonate 0.2% in the treatment of seasonal and perennial allergic conjunctivitis. *Eye Contact Lens* 30: 10–13.
- Kilpatrick GJ, McIntyre MS, Cox RF, et al (2007) CNS 7056: a novel ultra-short-acting benzodiazepine. *Anesthesiology* 107: 60–66.
- Kilpatrick GJ, Tilbrook GS (2006) Drug development in anaesthesia: industrial perspective. *Curr Opin Anaesthesiol* 19: 385–389.
- Kumar GN, Bodor N (1996) Soft anticholinergics. *Curr Med Chem* 3: 23–36.
- Labaree DC, Reynolds TY, Hochberg RB (2001) Estradiol-16 α -carboxylic acid esters as locally active estrogens. *J Med Chem* 44: 1802–1814.
- Labaree DC, Zhang JX, Harris HA, O'Connor C, Reynolds TY, Hochberg RB (2003) Synthesis and evaluation of B-, C-, and D-ring-substituted estradiol carboxylic acid esters as locally active estrogens. *J Med Chem* 46: 1886–1904.
- Lazarova T, Chen JS, Hamann B, et al (2003) Synthesis and biological evaluation of novel cyclosporin A analogues: potential soft drugs for the treatment of autoimmune diseases. *J Med Chem* 46: 674–676.
- Markowitz JS, DeVane CL, Boulton DW, et al (2000) Ethylphenidate formation in human subjects after the administration of a single dose of methylphenidate and ethanol. *Drug Metab Dispos* 28: 620–624.
- Morey TE, Seubert CN, Raatikainen MJP, et al (2001) Structure-activity relationships and electrophysiological effects of short-acting amiodarone homologs in guinea pig isolated heart. *J Pharmacol Exp Ther* 297: 260–266.

- Noble S, Goa KL (1998) Loteprednol etabonate. Clinical potential in the management of ocular inflammation *BioDrugs* 10: 329–339.
- Overington JP, Al-Lazikani B, Hopkins AL (2006) How many drug targets are there? *Nat Rev Drug Discov* 5: 993–996.
- Pacofsky GJ, Stafford JA, Cox RF, et al (2002) Relating the structure, activity, and physical properties of ultrashort-acting benzodiazepine receptor agonists. *Bioorg Med Chem Lett* 12: 3219–3222.
- Patrick KS, Kilts CD, Breese GR (1981) Synthesis and pharmacology of hydroxylated metabolites of methylphenidate. *J Med Chem* 24: 1237–1240.
- Prokai-Tatrai K, Kim HS, Prokai L (2008) The utility of oligopeptidase in brain-targeting delivery of an enkephalin analogue by prodrug design. *Open Med Chem J* 2: 97–100.
- Prokai-Tatrai K, Perjési P, Zharikova AD, Li X, Prokai L (2002) Design, synthesis, and biological evaluation of novel, centrally-acting thyrotropin-releasing hormone analogues. *Bioorg Med Chem Lett* 12: 2171–2174.
- Prokai-Tatrai K, Prokai L (2009) Prodrugs of thyrotropin-releasing hormone and related peptides as central nervous system agents. *Molecules* 14: 633–654.
- Prokai L, Prokai-Tatrai K, Zharikova AD, Nguyen V, Perjési P, Stevens SM, Jr. (2004) Centrally acting and metabolically stable thyrotropin-releasing hormone analogues by replacement of histidine with substituted pyridinium. *J Med Chem* 47: 6025–6033.
- Proudfoot JR (2002) Drugs, leads, and drug-likeness: an analysis of some recently launched drugs. *Bioorg Med Chem Lett* 12: 1647–1650.
- Raatikainen MJP, Morey TE, Druzgala P, Milner P, Gonzalez MD, Dennis DM (2000) Potent and reversible effects of ATI-2001 on atrial and atrioventricular nodal electrophysiological properties in guinea pig isolated perfused heart. *J Pharmacol Exp Ther* 295: 779–785.
- Sandham DA, Barker L, Beattie D, et al (2004) Synthesis and biological properties of novel glucocorticoid androstene C-17 furoate esters. *Bioorg Med Chem* 12: 5213–5224.
- Stafford JA, Pacofsky GJ, Cox RF, et al (2002) Identification and structure-activity studies of novel ultrashort-acting benzodiazepine receptor agonists. *Bioorg Med Chem Lett* 12: 3215–3218.
- Wu J, Yoon S-H, Wu W-M, Bodor N (2002) Synthesis and biological evaluation of a brain-targeted chemical delivery system of [Nva²]-TRH. *J Pharm Pharmacol* 54: 945–950.