

Original Research

Relationship between Platelets, Plateletcrit and Lymphocytes in the Complete Blood Count and Recurrent Implantation Failure: A Retrospective Study

Xiao Liu^{1,†}, Jianping Ou^{1,†}, Huaqiu Huang^{2,*}, Tingting Xia^{1,2,*}¹Center for Reproductive Medicine, The Third Affiliated Hospital of Sun Yat-sen University, 510630 Guangzhou, Guangdong, China²Department of Dermatology, The Third Affiliated Hospital of Sun Yat-sen University, 510630 Guangzhou, Guangdong, China*Correspondence: hhuaiq@mail.sysu.edu.cn (Huaqiu Huang); xiatingting@mail.sysu.edu.cn (Tingting Xia)

†These authors contributed equally.

Academic Editor: Michael H. Dahan

Submitted: 18 March 2024 Revised: 21 April 2024 Accepted: 30 April 2024 Published: 27 June 2024

Abstract

Background: Approximately 10% of women undergoing *in vitro* fertilization/intracytoplasmic sperm injection (IVF/ICSI) treatment experience recurrent implantation failure (RIF). The causes for RIF are complicated. Inflammatory processes and thrombophilia play important roles in the development of RIF. This retrospective study was conducted to investigate whether there is an association between inflammatory parameters, including platelets (PLTs), plateletcrit (PCT) and lymphocytes in the complete blood count (CBC) and RIF. **Methods:** This was a single-center retrospective evaluation of 150 women who had a history of RIF and 163 controls who had a live birth after the first embryo transfer. Basal characteristics, CBC and coagulation parameters of both groups were compared. **Results:** Compared with the controls, the women with a history of RIF had significantly lower PLT, PCT and lymphocyte counts ($p = 0.03$, $p = 0.019$ and $p = 0.012$, respectively). Receiver operating characteristic curve analysis revealed that PLT had a sensitivity of 48.6% and a specificity of 66.4% with a cutoff value of 271.5 (area under the curve (AUC): 0.575); PCT had a sensitivity of 77% and a specificity of 38.9% with a cutoff value of 0.245 (AUC: 0.575); and lymphocyte count had a sensitivity of 49.3% and a specificity of 71% with a cutoff value of 2.015 (AUC: 0.577) for predicting RIF. The multivariate receiver operating characteristic (ROC) analysis revealed a cutoff value of 0.508 with a sensitivity of 70.3% and a specificity of 48.9% (AUC: 0.599) ($p = 0.004$). **Conclusions:** PLT, PCT and lymphocyte counts in patients with RIF are significantly reduced, although they are not effective parameters for predicting RIF.

Keywords: complete blood count; platelet; plateletcrit; lymphocyte; recurrent implantation failure

1. Introduction

In vitro fertilization/intracytoplasmic sperm injection (IVF/ICSI) technology has developed quickly, and success rates have gradually improved over the past 40 years. However, approximately 10% of women undergoing IVF/ICSI treatment still suffer from recurrent implantation failure (RIF) [1]. RIF is defined by the European Society of Human Reproduction and Embryology (ESHRE) as failure after ≥ 3 failed embryo transfers (ETs) with high-quality embryos or ≥ 10 embryos in multiple transfers [2].

The causes of RIF are complicated as three different players are involved: female and male partners as well as the embryo. Maternal factors include age, chromosomal abnormalities, anatomical factors, endocrine factors, infectious factors and immunity factors [3]. In reproduction, the development of maternal immune tolerance is a key factor for embryo implantation, while inflammatory processes play important roles in the development of RIF [4]. The inflammatory reaction of the endometrium is characterized by lymphocyte infiltration through a mixture of lymphocytes and macrophages, which is a common pathologic mechanism for RIF [5–7]. Therefore, inflammatory markers of the endometrium may be used to predict RIF. However, en-

dometrial biopsy is invasive. Thus, it is necessary to identify easily detectable inflammatory markers in patients with RIF. The platelet (PLT), plateletcrit (PCT), and lymphocyte counts along with the systemic immune-inflammation index (SII) are inflammatory markers for various diseases and are available directly from the complete blood count (CBC) [8–11]. Since RIF is closely related to the inflammatory process, the PLT, PCT, and lymphocyte counts and SII may be used in the prediction of RIF.

Thrombophilia also plays a significant role in the development of RIF [12]. A retrospective study reported that coagulation parameters, such as platelet aggregation and prothrombin time, are predictive of RIF [3]. Moreover, a single-center prospective study showed that higher fibrinogen to albumin ratio (FAR) levels were related to adverse pregnancy outcomes such as recurrent pregnancy loss [13]. Therefore, based on previous studies, inflammatory parameters of CBC, coagulation parameters and FAR levels could be effective markers for predicting RIF. Clarification of the levels of these indicators in patients with RIF is essential.

To the best of our knowledge, inflammatory and thrombotic hematological markers such as the PLT, PCT, and lymphocyte counts, SII and FAR have not been previ-



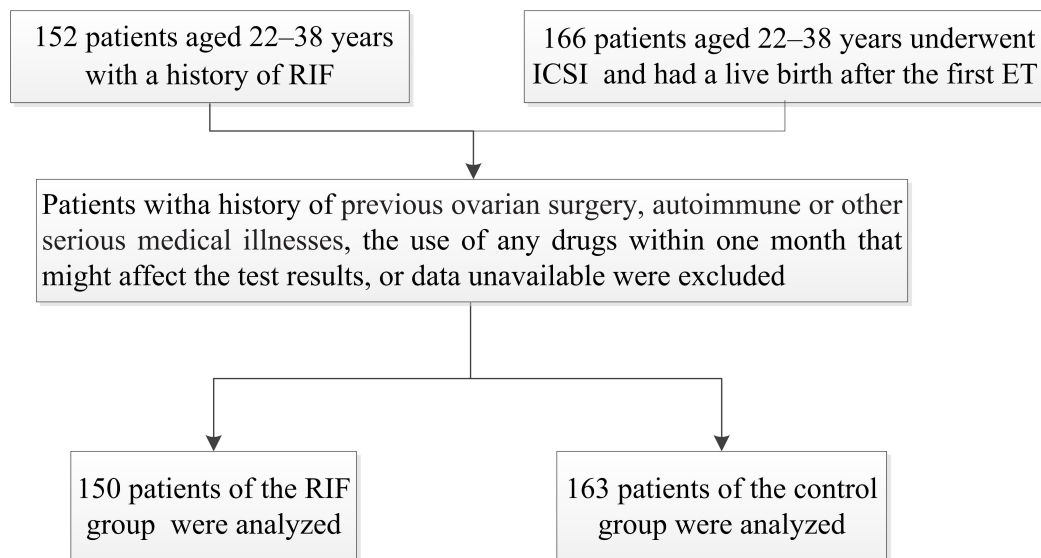


Fig. 1. The study flowchart. RIF, recurrent implantation failure; ICSI, intracytoplasmic sperm injection; ET, embryo transfer.

ously investigated in RIF patients. In this study, we evaluated CBC parameters, fibrinogen and FAR changes in patients with a history of RIF, while the control group consisted of patients who had a live birth after the first ET.

2. Materials and Methods

2.1 Patients and Study Design

The data of this retrospective study was obtained from the assisted reproductive technology (ART) database at the Department of Assisted Reproduction of the Third Affiliated Hospital of Sun Yat-sen University between March 2016 and May 2021. The RIF group included women who had experienced ≥ 3 failed ETs with high-quality embryos or the failed transfer of ≥ 10 embryos in multiple transfers. The control group was age-matched women who had no history of implantation failure but underwent ICSI treatment due to male infertility and had a live birth after the first ET. In the present study, high-quality embryos on day 3 after oocyte retrieval were defined as having ≥ 7 cells on day 3 with high score or grade, and high-quality blastocysts were assessed above grade B ($\geq 3\text{BB}$) [14,15].

The inclusion criteria for the RIF group were: (1) individuals aged 22–38 years; (2) those experiencing infertility caused by tubal factors, endometriosis, anovulation, male factors or unexplained reasons; (3) those for whom karyotype analysis indicated that both partners were normal; (4) those for whom hysteroscopy was normal; (5) those with no reproductive tract infection or genital malformation [16,17]. The inclusion criteria for the control group were: (1) individuals aged 22–38 years; (2) individuals with primary infertility; (3) healthy women without reproductive diseases [16].

A total of 152 patients were assigned to the RIF group and 166 patients were assigned to the control group. The exclusion criteria for both groups were: (1) a history of previ-

ous ovarian surgery, autoimmune or other serious medical illnesses [18] (determined as diabetes, hypertension, obesity, malignancy, chronic disease, chronic venous insufficiency); (2) the use of any drugs within one month that might affect the test results (hormone therapy, ovulation promoting drugs, nonsteroidal anti-inflammatory drugs, antiplatelet drugs or anticoagulants); (3) data unavailable [16,18]. A total of 150 patients of the RIF group and 163 patients of the control group were analyzed (Fig. 1).

All patients had measures of follicle-stimulating hormone (FSH), luteinizing hormone (LH), and estradiol (E2) on day two or three of the natural menstrual cycle. Blood samples for anti-Müllerian hormone (AMH), CBC and coagulation parameters detection were collected on any day of the natural menstrual cycle without acute infection [16,18]. This study was approved by all patients who were provided informed consent for those undergoing ART treatments in our center. The anonymity of the patients has been strictly protected.

2.2 Laboratory Analysis

Body mass index (BMI) was calculated as the weight (kg) divided by the square of the height (m^2). Serum levels of AMH, FSH, LH, and E2 were measured using chemiluminescence methods. White blood cells (WBCs) ($\times 10^9/\text{L}$), red blood cells (RBCs) ($\times 10^{12}/\text{L}$), hemoglobin (HGB) (g/L), hematocrit (HCT), mean corpuscular volume (MCV) (fL), mean corpuscular hemoglobin (MCH) (pg), mean corpuscular hemoglobin concentration (MCHC) (g/L), PLT ($\times 10^9/\text{L}$), red cell distribution width (RDW), platelet distribution width (PDW), mean platelet volume (MPV) (fL), PCT, neutrophils, and lymphocytes were examined through the CBC, which was performed by cytoanalysis. The neutrophil to lymphocyte ratio (NLR) was calculated by dividing the neutrophil count ($\times 10^9/\text{L}$) by the lymphocyte count

Table 1. Comparison of basal characteristics, CBC and coagulation parameters in RIF and control groups.

	RIF (n = 150)	Control (n = 163)	<i>p</i> value
Age (years)	31.00 (29.00–33.00)	30.00 (28.00–32.00)	0.052
BMI (kg/m ²)	20.50 (19.13–22.58)	20.76 (19.23–23.13)	0.337
AMH (ng/mL)	3.27 (1.95–6.13)	3.87 (2.40–5.84)	0.244
Duration of infertility (years)	3.00 (2.00–5.00)	3.00 (2.00–4.00)	0.465
Baseline FSH (IU/L)	6.74 (5.79–8.31)	6.66 (5.93–7.77)	0.161
Baseline LH (IU/L)	5.33 (4.22–6.98)	5.32 (4.29–6.75)	0.408
Baseline E2 (pg/mL)	38.99 (29.44–49.53)	34.55 (26.06–44.12)	0.045
WBC ($\times 10^9/L$)	5.79 (4.83–6.98)	6.13 (5.24–7.06)	0.226
RBC ($\times 10^{12}/L$)	4.51 (4.23–4.71)	4.58 (4.35–4.79)	0.109
HGB (g/L)	133.00 (125.00–138.75)	134.00 (129.00–139.00)	0.142
HCT	0.41 (0.39–0.42)	0.41 (0.38–0.42)	0.167
MCV (fL)	88.95 (86.03–91.88)	88.80 (86.45–91.95)	0.986
MCH (pg)	29.90 (28.53–30.80)	29.60 (28.60–30.50)	0.489
MCHC (g/L)	332.00 (326.25–337.00)	331.00 (324.50–338.00)	0.673
PLT ($\times 10^9/L$)	248.50 (218.50–296.25)	263.00 (229.00–302.00)	0.030
RDW	0.12 (0.12–0.13)	0.12 (0.12–0.13)	0.935
PDW	11.80 (10.73–13.00)	11.70 (10.80–13.25)	0.757
MPV (fL)	10.35 (9.80–11.00)	10.30 (9.95–11.00)	0.590
PCT	0.26 (0.23–0.30)	0.27 (0.25–0.31)	0.019
Neutrophil ($\times 10^9/L$)	3.27 (2.66–4.26)	3.43 (2.75–4.26)	0.497
Lymphocyte ($\times 10^9/L$)	1.86 (1.60–2.08)	2.02 (1.67–2.44)	0.012
NLR	1.74 (1.37–2.34)	1.71 (1.32–2.27)	0.294
PLR	138.33 (114.45–165.61)	137.05 (106.48–167.92)	0.524
Fibrinogen (g/L)	3.06 (2.73–3.39)	3.04 (2.69–3.53)	0.624
Albumin (g/L)	46.95 (45.15–48.55)	47.10 (45.30–48.50)	0.915
FAR	0.07 (0.06–0.07)	0.07 (0.06–0.07)	0.562
SII	447.74 (347.98–617.94)	446.90 (329.69–642.29)	0.980

Data are presented as median (interquartile range). CBC, complete blood count; RIF, recurrent implantation failure; BMI, body mass index; AMH, anti-Müllerian hormone; FSH, follicle-stimulating hormone; LH, luteinizing hormone; E2, estradiol; WBC, white blood cell; RBC, red blood cell; HGB, hemoglobin; HCT, hematocrit; MCV, mean corpuscular volume; MCH, mean corpuscular hemoglobin; MCHC, mean corpuscular hemoglobin concentration; PLT, platelet; RDW, red cell distribution width; PDW, platelet distribution width; MPV, mean platelet volume; PCT, plateletcrit; NLR, neutrophil to lymphocyte ratio; PLR, platelet to lymphocyte; FAR, fibrinogen to albumin; SII, systemic immune-inflammation index.

($\times 10^9/L$). Coagulation parameters such as fibrinogen (g/L) were measured through a coagulation analyzer. The FAR was calculated by dividing the fibrinogen level by the albumin level (g/L). The SII was calculated as follows: PLT count \times neutrophil count/lymphocyte count ($\times 10^9/L$). The basal characteristics, basal CBC, NLR, FAR, SII and coagulation parameters of both groups were compared.

2.3 Statistical Analysis

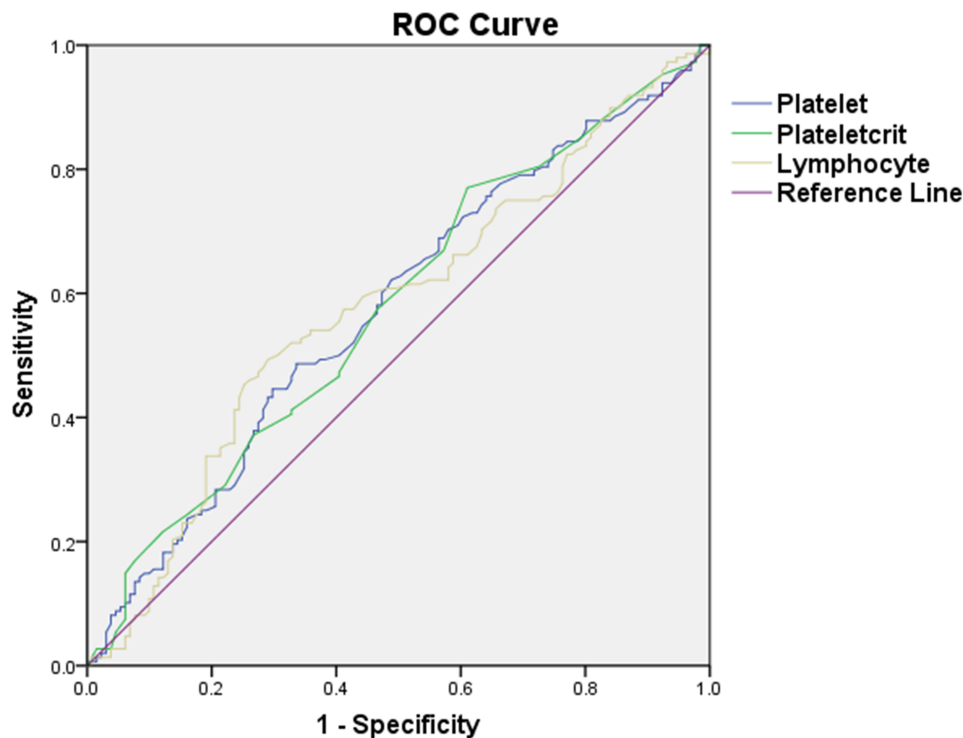
All data were analyzed using the SPSS statistical software package (version 23.0, IBM, Armonk, NY, USA). Numerical data are presented as median (interquartile range). The Kolmogorov–Smirnov test was used to determine the distribution of the data. HCT in both groups was normally distributed, and the difference in HCT between the two groups was measured by the continuous *t* test. The other continuous variables in this study without a normal distribution

were analyzed using Mann–Whitney U tests. An optimal cutoff value for the significant parameters was determined using receiver operator characteristic (ROC) curve analysis. The sensitivity and specificity, which were evaluated by the area under the curve (AUC), were applied to determine the accuracy of the test. *p* < 0.05 was considered to indicate statistical significance.

3. Results

No significant differences in age, BMI, duration of infertility, AMH, baseline FSH and LH levels were detected between the two groups (*p* > 0.05). Baseline E2 levels in the RIF group were significantly higher than those in the control group (*p* = 0.045) (Table 1).

The RIF group had significantly lower PLT, PCT and lymphocyte counts than the control group (*p* = 0.03, *p* = 0.019 and *p* = 0.012, respectively) (Table 1). The ROC



Variables	Area	Standard Error	P value	Asymptotic 95% Confidence Interval	
				Lower Bound	Upper Bound
Platelet	0.575	0.034	0.031	0.508	0.642
Plateletcrit	0.575	0.034	0.030	0.508	0.642
Lymphocyte	0.577	0.034	0.026	0.510	0.645

Fig. 2. Sensitivity and specificity of the platelet, plateletcrit and lymphocyte counts. ROC, receiver operator characteristic.

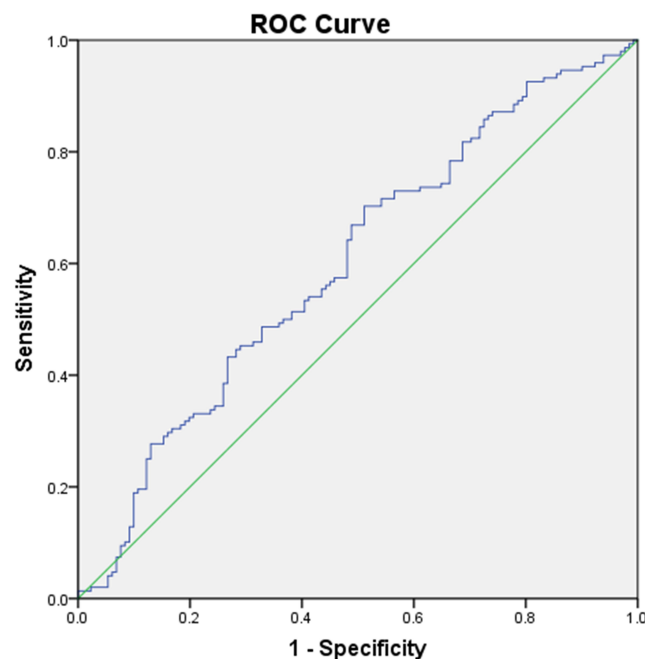
analysis showed that PLT had a sensitivity of 48.6% and a specificity of 66.4% with a cutoff value of 271.5 (AUC: 0.575); PCT had a sensitivity of 77% and a specificity of 38.9% with a cutoff value of 0.245 (AUC: 0.575); and lymphocyte count had a sensitivity of 49.3% and a specificity of 71% with a cutoff value of 2.015 (AUC: 0.577) for predicting RIF (Fig. 2). The multivariate ROC analysis revealed a cutoff value of 0.508 with a sensitivity of 70.3% and a specificity of 48.9% (AUC: 0.599) ($p = 0.004$) (Fig. 3). There were no significant differences between the RIF and control groups in terms of other CBC parameters, including the WBC count, RBC count, HGB level, HCT level, MCV, MCH level, MCHC, MPV, RDW, PDW, neutrophil count, NLR and SII, or coagulation parameters, such as fibrinogen levels, the FAR and albumin levels ($p > 0.05$) (Table 1).

4. Discussion

In this study, we found that PLT, PCT and lymphocyte counts were significantly lower in RIF patients than in women who had a live birth after the first ET. However, these parameters were not effective markers for predicting RIF risk.

Successful embryo implantation requires a favorable endometrium, good-quality embryos and delicate coordination between the embryo and endometrium [19]. The tightly controlled inflammatory response in the window of receptivity is essential for successful implantation and growing evidence suggests that chronic inflammation is associated with RIF [20–22]. In the pathogenesis of RIF, inflammation and coagulation disorders are suggested to have important roles, since immune hyperactivity damages trophoblast cells by increasing the inflammatory uterine environment and fibrin deposition affects endometrial blood flow, both of which adversely affect reproductive outcomes [3,23].

Aynioglu *et al.* [24] reported that lymphocyte counts were significantly higher in patients with recurrent pregnancy loss than in controls. However, experimental research on animals demonstrated that heifers with low-grade inflammation (lymphocyte count $>5.6 \times 10^9/L$) had a higher percentage of blastocyst formation than control heifers, and CBC indices at the time of ovum pick-up were associated with the IVF outcome [25]. Consistent with the conclusions obtained from animal research, RIF patients had a lower lymphocyte count than controls in our research.



Area	Standard Error	P value	Asymptotic 95% Confidence Interval	
			Lower Bound	Upper Bound
0.599	0.034	0.004	0.532	0.666

Fig. 3. Sensitivity and specificity of multivariate ROC of the platelet, plateletcrit and lymphocyte counts. ROC, receiver operator characteristic.

Since the AUC was less than 0.7 [26], lymphocyte count was not an effective parameter for predicting RIF. However, this is a preliminary study exploring the lymphocyte count in the CBC of patients with RIF, and the cause and mechanism of the results still need to be further investigated.

PCT is one of the PLT indices which shows the percentage of blood occupied by platelets and is thought to be a potential marker of inflammation, which is significantly negatively related to the degree of inflammation [9]. Studies have shown that activated platelets allow the delivery of bioactive molecules to target tissues at high concentrations, resulting in the stimulation of angiogenesis [27]. A double-blind randomized controlled trial demonstrated that the intrauterine infusion of platelet-rich plasma could improve the implantation rates in women with a history of RIF [28]. Therefore, certain PLT and PCT levels are necessary for the successful implantation of embryos and low PLT and PCT levels as present in the CBC may lead to an excessive inflammatory reaction and angiogenesis disorder from the blood system to the endometrial environment, which is not suitable for embryo implantation. We showed that PLT and PCT counts were dramatically decreased in patients with RIF. However, some studies reported that the PLT and PCT counts were significantly higher in patients with recurrent

pregnancy loss as compared to controls [24]. This may be because RIF and recurrent abortion occur at different time periods and their inflammatory mechanisms are different. However, as the AUC was less than 0.7 [26], PLT and PCT counts may not effective markers for predicting RIF risk.

A recent study assessed the value of inflammatory hematological markers such as the WBC count, NLR, MPV, and PDW and concluded that these markers were not effective in predicting IVF success [29]. Another study found that none of the inflammatory markers, including the WBC count, neutrophil count and the FAR, as demonstrated by the CBC were predictive of clinical pregnancy, take-home baby, and clinical and biochemical abortion rates among nonobese patients with unexplained infertility [16]. Additionally, the RBC count, HGB level, HCT level, MCV, MCH level, and MCHC were statistically similar in pregnant patients, women with a history of recurrent pregnancy loss and healthy controls [30]. In accordance with these studies, our data also showed that the WBC count, RBC count, HGB level, HCT level, MCV, MCH level, MCHC, RDW, PDW, MPV, neutrophil count and NLR were not effective parameters for predicting RIF.

The SII is a new inflammatory marker that has been reported to better reflect systemic inflammation than the NLR alone in many diseases [31,32], but it has never been stud-

ied in people with RIF. In the current study, no predictive value of the SII for RIF was found, which may be due to the fact that the systemic immune-inflammation of peripheral blood is not evident in patients with RIF.

The prethrombotic state is a state of hypercoagulability, which can lead to embryo implantation failure [33]. Recent studies seem to indicate a close relationship between the prethrombotic state and unexplained RIF [3,34]. Kuroda *et al.* [35,36] reported that 20%–30% of patients with RIF had thrombophilia and they believed that the treatment of thrombophilia is a predictive factor for RIF. A recent review suggested that the optimization of thyroid function, thrombophilia, immunity, and uterine milieu treatment strategy can improve pregnancy outcomes in women with RIF, except for advanced age women with embryonic factor-induced reproductive failure [37]. Moreover, it was found that patients with RIF have reduced plasma fibrinolytic potential [38]. Recent retrospective studies found a significantly elevated level of fibrinogen in Chinese women with RIF or unexplained recurrent pregnancy loss as compared to controls (2.65% vs. 2.47%) [3,39]. However, fibrinogen and albumin levels and the FAR were similar in the two groups in the present study. Although the sample size of the current study is the largest thus far, the fibrinogen content and the FAR among RIF patients need further investigation.

The limitations of our study include the use of single-center data and the small-scale retrospective design. To minimize the risk of bias in the control patient selection, we strictly followed the inclusion and exclusion criteria. Despite these limitations, this was the first study using PLT, PCT and lymphocyte count as markers to determine their associations with RIF.

5. Conclusions

A decline in PLT, PCT and lymphocyte counts were found to be associated with RIF. However, these parameters were not effective markers for predicting RIF risk. Our findings should be supported by further prospective studies involving a larger population to clarify the relationship between these blood cell function markers and RIF.

Availability of Data and Materials

The raw data generated in this study are available upon reasonable request from the corresponding authors.

Author Contributions

Conceptualization: TX, HH, JO. Data curation: XL, TX. Formal analysis and investigation: XL, TX. Methodology: TX, HH, JO. Resources: TX, XL. Supervision: HH, JO. Writing – original draft: XL, TX. Writing – review & editing: HH, JO, TX. All authors contributed to editorial changes in the manuscript. All authors read and approved the final manuscript. All authors have participated sufficiently

in the work and agreed to be accountable for all aspects of the work.

Ethics Approval and Consent to Participate

This study was approved by the Institutional Review Board of the Third Affiliated Hospital of Sun Yat-sen University [2022]02-084-01. All patients in this study signed informed consent forms to undergo IVF/ICSI treatments in our center, and the anonymity of the patients has been strictly protected.

Acknowledgment

Not applicable.

Funding

This project was supported by the Medical Scientific Research Foundation of Guangdong Province of China (Grant No.: A2020575).

Conflict of Interest

The authors declare no conflict of interest.

References

- [1] Busnelli A, Reschini M, Cardellicchio L, Vegetti W, Somigliana E, Vercellini P. How common is real repeated implantation failure? An indirect estimate of the prevalence. *Reproductive Biomedicine Online*. 2020; 40: 91–97.
- [2] Cimadomo D, Craciunas L, Vermeulen N, Vomstein K, Toth B. Definition, diagnostic and therapeutic options in recurrent implantation failure: an international survey of clinicians and embryologists. *Human Reproduction*. 2021; 36: 305–317.
- [3] Yang W, Sun Q, Zhou Z, Gao Y, Shi F, Wu X, *et al.* Coagulation parameters predictive of repeated implantation failure in Chinese women: A retrospective study. *Medicine*. 2020; 99: e23320.
- [4] Negishi Y, Shima Y, Takeshita T, Morita R. Harmful and beneficial effects of inflammatory response on reproduction: sterile and pathogen-associated inflammation. *Immunological Medicine*. 2021; 44: 98–115.
- [5] Crum CP, Hornstein MD, Nucci MR, Mutter GL. Hertig and beyond: a systematic and practical approach to the endometrial biopsy. *Advances in Anatomic Pathology*. 2003; 10: 301–318.
- [6] Johnston-MacAnanny EB, Hartnett J, Engmann LL, Nulsen JC, Sanders MM, Benadiva CA. Chronic endometritis is a frequent finding in women with recurrent implantation failure after in vitro fertilization. *Fertility and Sterility*. 2010; 93: 437–441.
- [7] Kliman HJ, Frankfurter D. Clinical approach to recurrent implantation failure: evidence-based evaluation of the endometrium. *Fertility and Sterility*. 2019; 111: 618–628.
- [8] Núñez J, Miñana G, Bodí V, Núñez E, Sanchis J, Husser O, *et al.* Low lymphocyte count and cardiovascular diseases. *Current Medicinal Chemistry*. 2011; 18: 3226–3233.
- [9] Coskun ME, Alidris A, Temel MT, Akbayram S, Hizli S. Plateletcrit: A possible biomarker of inflammation in hepatitis A infection. *Nigerian Journal of Clinical Practice*. 2019; 22: 727–730.
- [10] Bakogiannis C, Sachse M, Stamatelopoulos K, Stellos K. Platelet-derived chemokines in inflammation and atherosclerosis. *Cytokine*. 2019; 122: 154157.
- [11] Walzik D, Joisten N, Zacher J, Zimmer P. Transferring clinical

cally established immune inflammation markers into exercise physiology: focus on neutrophil-to-lymphocyte ratio, platelet-to-lymphocyte ratio and systemic immune-inflammation index. *European Journal of Applied Physiology*. 2021; 121: 1803–1814.

- [12] Qublan HS, Eid SS, Ababneh HA, Amarin ZO, Smadi AZ, Al-Khafaji FF, *et al.* Acquired and inherited thrombophilia: implication in recurrent IVF and embryo transfer failure. *Human Reproduction*. 2006; 21: 2694–2698.
- [13] Cimsir MT, Yildiz MS. Could fibrinogen to albumin ratio be a predictive marker for recurrent pregnancy loss. *International Journal of Clinical Practice*. 2021; 75: e14520.
- [14] ESHRE Special Interest Group of Embryology and Alpha Scientists in Reproductive Medicine. The Vienna consensus: report of an expert meeting on the development of ART laboratory performance indicators. *Reproductive Biomedicine Online*. 2017; 35: 494–510.
- [15] Ji H, Zhou Y, Cao S, Zhang J, Ling X, Zhao C, *et al.* Effect of Embryo Developmental Stage, Morphological Grading, and Ploidy Status on Live Birth Rate in Frozen Cycles of Single Blastocyst Transfer. *Reproductive Sciences*. 2021; 28: 1079–1091.
- [16] Tola EN. The association between in vitro fertilization outcome and the inflammatory markers of complete blood count among nonobese unexplained infertile couples. *Taiwanese Journal of Obstetrics & Gynecology*. 2018; 57: 289–294.
- [17] Dun EC, Nezhat CH. Tubal factor infertility: diagnosis and management in the era of assisted reproductive technology. *Obstetrics and Gynecology Clinics of North America*. 2012; 39: 551–566.
- [18] Çakiroğlu Y, Vural F, Vural B. The inflammatory markers in polycystic ovary syndrome: association with obesity and IVF outcomes. *Journal of Endocrinological Investigation*. 2016; 39: 899–907.
- [19] Nimbkar-Joshi S, Rosario G, Katkam RR, Manjramkar DD, Metkari SM, Puri CP, *et al.* Embryo-induced alterations in the molecular phenotype of primate endometrium. *Journal of Reproductive Immunology*. 2009; 83: 65–71.
- [20] Tulandi T, Marzal A. Redefining reproductive surgery. *Journal of Minimally Invasive Gynecology*. 2012; 19: 296–306.
- [21] Guo L, Guo A, Yang F, Li L, Yan J, Deng X, *et al.* Alterations of Cytokine Profiles in Patients with Recurrent Implantation Failure. *Frontiers in Endocrinology*. 2022; 13: 949123.
- [22] Sheikhsari G, Pourmoghdam Z, Danaii S, Mehdizadeh A, Yousefi M. Etiology and management of recurrent implantation failure: A focus on intra-uterine PBMC-therapy for RIF. *Journal of Reproductive Immunology*. 2020; 139: 103121.
- [23] Franasia JM, Alecsandru D, Forman EJ, Gemmell LC, Goldberg JM, Llarena N, *et al.* A review of the pathophysiology of recurrent implantation failure. *Fertility and Sterility*. 2021; 116: 1436–1448.
- [24] Aynioglu O, Isik H, Sahbaz A, Harma MI, Isik M, Kokturk F. Can Plateletcrit be a Marker for Recurrent Pregnancy Loss? *Clinical and Applied Thrombosis/Hemostasis*. 2016; 22: 447–452.
- [25] Kowsar R, Komeili M, Sadeghi N, Sadeghi K. Multistep analysis reveals the relationship between blood indices at the time of ovum pick-up and in vitro embryo production in heifers. *Theriogenology*. 2021; 159: 153–164.
- [26] Yue JK, Kobeissy FH, Jain S, Sun X, Phelps RRL, Korley FK, *et al.* Neuroinflammatory Biomarkers for Traumatic Brain Injury Diagnosis and Prognosis: A TRACK-TBI Pilot Study. *Neurotrauma Reports*. 2023; 4: 171–183.
- [27] Kramer ME, Keaney TC. Systematic review of platelet-rich plasma (PRP) preparation and composition for the treatment of androgenetic alopecia. *Journal of Cosmetic Dermatology*. 2018; 17: 666–671.
- [28] Nazari L, Salehpour S, Hosseini MS, Hashemi Moghanjoughi P. The effects of autologous platelet-rich plasma in repeated implantation failure: a randomized controlled trial. *Human Fertility*. 2020; 23: 209–213.
- [29] Ozgu-Erdinc AS, Coskun B, Yorganci A, Hancerliogullari N, Yilmaz N, Engin-Ustun Y. The Role of Inflammatory Hematological Markers in Predicting IVF Success. *JBRA Assisted Reproduction*. 2021; 25: 71–75.
- [30] Dundar O, Pektas MK, Bodur S, Bakir LV, Cetin A. Recurrent pregnancy loss is associated with increased red cell distribution width and platelet distribution width. *The Journal of Obstetrics and Gynaecology Research*. 2015; 41: 551–558.
- [31] Aziz MH, Sideras K, Aziz NA, Mauff K, Haen R, Roos D, *et al.* The Systemic-immune-inflammation Index Independently Predicts Survival and Recurrence in Resectable Pancreatic Cancer and its Prognostic Value Depends on Bilirubin Levels: A Retrospective Multicenter Cohort Study. *Annals of Surgery*. 2019; 270: 139–146.
- [32] Wu J, Yan L, Chai K. Systemic immune-inflammation index is associated with disease activity in patients with ankylosing spondylitis. *Journal of Clinical Laboratory Analysis*. 2021; 35: e23964.
- [33] Wang T, Kang X, Zhao A, He L, Liu Z, Liu F. Low-dose aspirin improves endometrial receptivity in the midluteal phase in unexplained recurrent pregnancy loss. *International Journal of Gynaecology and Obstetrics*. 2020; 150: 77–82.
- [34] Azem F, Many A, Ben Ami I, Yovel I, Amit A, Lessing JB, *et al.* Increased rates of thrombophilia in women with repeated IVF failures. *Human Reproduction*. 2004; 19: 368–370.
- [35] Kuroda K, Matsumura Y, Ikemoto Y, Segawa T, Hashimoto T, Fukuda J, *et al.* Analysis of the risk factors and treatment for repeated implantation failure: OPTimization of Thyroid function, IMmunity, and Uterine Milieu (OPTIMUM) treatment strategy. *American Journal of Reproductive Immunology*. 2021; 85: e13376.
- [36] Kuroda K, Horikawa T, Moriyama A, Ojio Y, Takamizawa S, Watanabe H, *et al.* Therapeutic efficacy of the optimization of thyroid function, thrombophilia, immunity and uterine milieu (OPTIMUM) treatment strategy on pregnancy outcomes after single euploid blastocyst transfer in advanced age women with recurrent reproductive failure. *Reproductive Medicine and Biology*. 2023; 22: e12554.
- [37] Kuroda K. A review of the optimization of thyroid function, thrombophilia, immunity and uterine milieu treatment strategy for recurrent implantation failure and recurrent pregnancy loss. *Reproductive Medicine and Biology*. 2024; 23: e12561.
- [38] Martinez-Zamora MA, Creus M, Tassies D, Reverter JC, Civico S, Carmona F, *et al.* Reduced plasma fibrinolytic potential in patients with recurrent implantation failure after IVF and embryo transfer. *Human Reproduction*. 2011; 26: 510–516.
- [39] Wang T, Kang X, He L, Liu Z, Xu H, Zhao A. Prediction of thrombophilia in patients with unexplained recurrent pregnancy loss using a statistical model. *International Journal of Gynaecology and Obstetrics*. 2017; 138: 283–287.