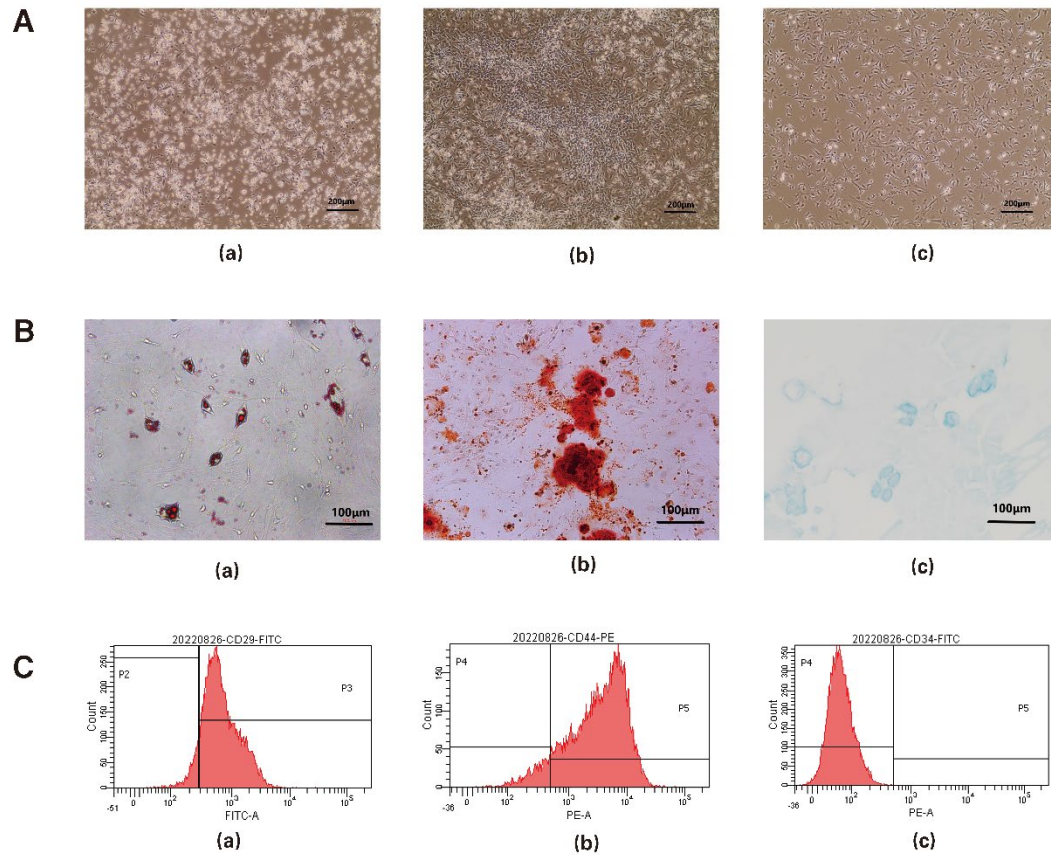


**Supplementary Table 1. The Plasma levels of glucose, creatinine and urea nitrogen in rats**

<b>Hematological indicators</b>	<b>NC</b> (n=5)	<b>DM</b> (n=5)	<b>Met</b> (n=5)	<b>Exo</b> (n=5)
Glucose(mmol/L)	6.14±1.34 <sup>#</sup>	35.40±3.17	24.06±2.11 <sup>#</sup>	12.01±7.10 <sup>#</sup>
Urea nitrogen(mmol/L)	4.67±0.86 <sup>#</sup>	7.93±0.93	5.54±1.61 <sup>#</sup>	4.09±1.47 <sup>#</sup>
Creatinine(μmmol/L)	20.18±4.08 <sup>#</sup>	36.02±6.00	26.90±3.64 <sup>#</sup>	24.22±10.74 <sup>#</sup>

<sup>#</sup>*p* < 0.05 compared with DM group.

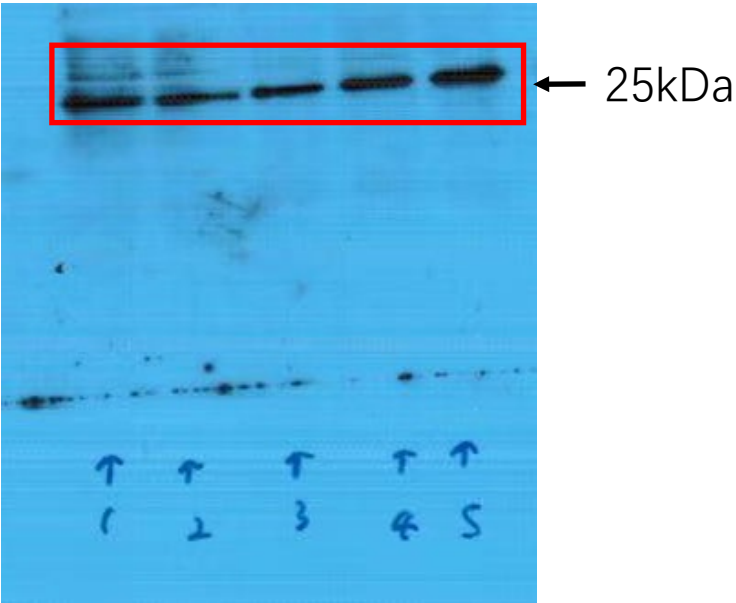


### Supplementary Figure 1. Identification of bone marrow mesenchymal stem cells

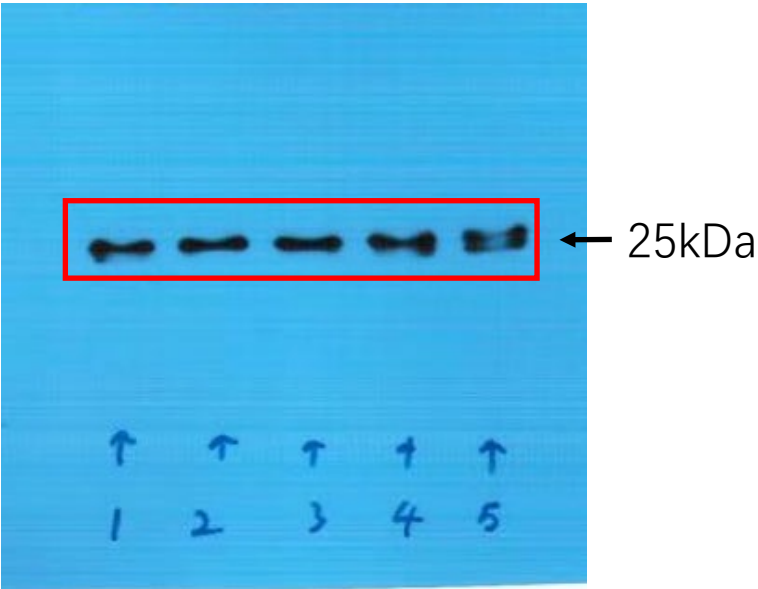
A. Under the light microscope, BMSCs have a fibroblast-like morphology, with oval nuclei in the center of the cells, and when the density is high, they grow in a spiral or radial shape A(a), A(b). As the number of divisions increased, BMSCs became large and flat A(c). A(a) P0 generation on the 4th day(100 $\times$ ), A(b) P0 generation on the 7th day(100 $\times$ ), A(c): P1 generation on the 10th day(100 $\times$ ). B. The BMSCs cultured in this experiment have the potential of multilineage differentiation. B (a) Oil red O staining showed that BMSCs were induced to differentiate into adipocytes(200 $\times$ ). B (b) Alizarin red staining showed that BMSCs were induced to differentiate into osteocytes(200 $\times$ ). B(c) Alcian blue staining showed that BMSCs were induced to differentiate into chondrocytes(200 $\times$ ). C. Flow cytometry showed that the detected cells positively expressed CD29 and CD44, but not CD34.

Exosome marker

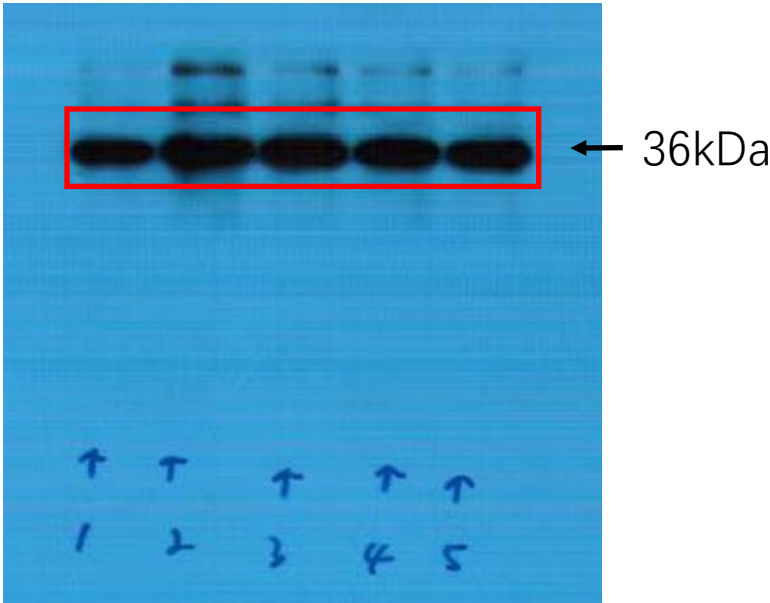
CD81



CD9

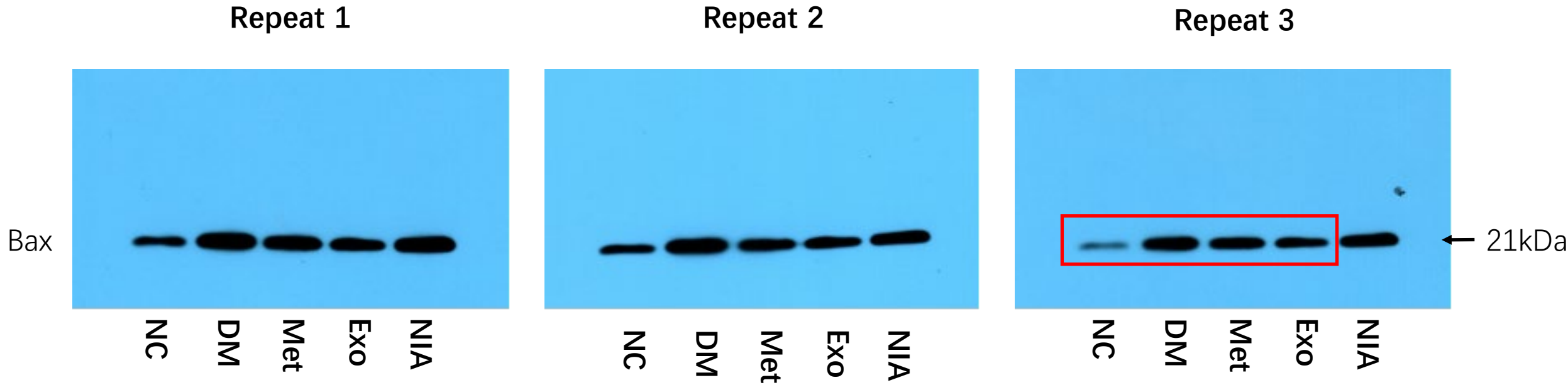


GAPDH



Representative strip

**Bax antibody (Abcam, Cat.ab32503, 1:2000)**



NIA, non-interest area.

Representative strip

Caspase-9 antibody (CST, Cat.#9504, 1:2000)

Repeat 1

Repeat 2

Repeat 3

Caspase 9

Cleaved  
Caspase 9

← 49kDa

← 39kDa

← 37kDa

NC  
DM  
Met  
Exo  
NIA

NC  
DM  
Met  
Exo  
NIA

NC  
DM  
Met  
Exo  
NIA

NIA, non-interest area.

Representative strip

Caspase-3 antibody (CST, Cat.#14220, 1:2000)

Repeat 1

Repeat 2

Repeat 3

Caspase 3

Cleaved  
Caspase 3

← 35kDa

← 19kDa

← 17kDa

NC  
DM  
Met  
Exo  
NIA

NC  
DM  
Met  
Exo  
NIA

NC  
DM  
Met  
Exo  
NIA

NIA, non-interest area.

Representative strip



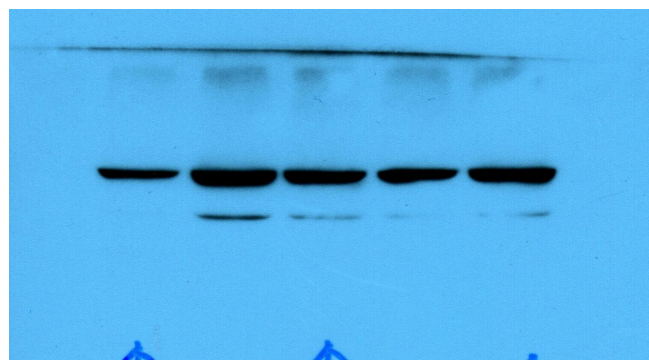
**p65 antibody (CST, Cat.8242S, 1:2000)**

**Repeat 1**

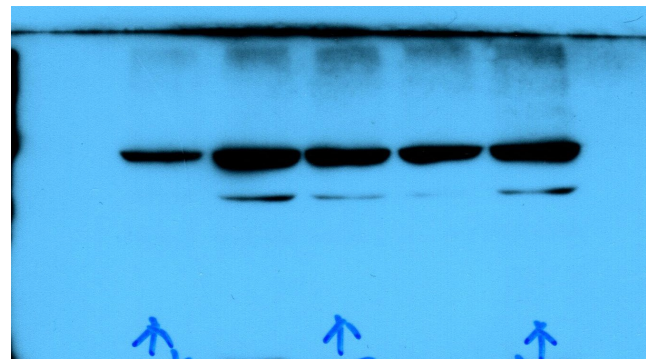
**Repeat 2**

**Repeat 3**

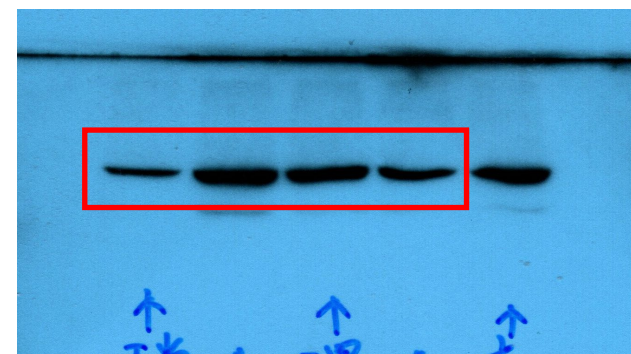
NF- $\kappa$ B  
(p65)



NC  
DM  
Met  
Exo  
NIA



NC  
DM  
Met  
Exo  
NIA



NC  
DM  
Met  
Exo  
NIA

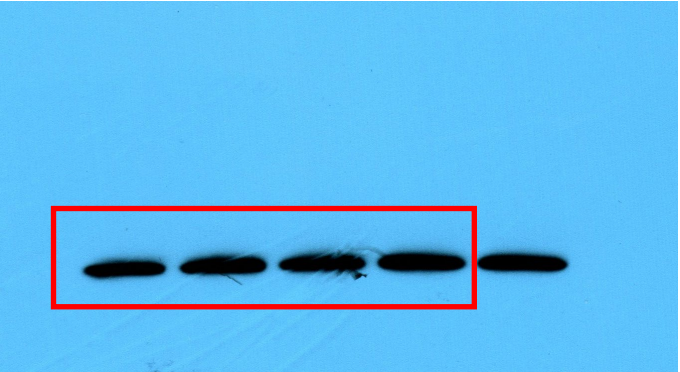
← 65kDa

NIA, non-interest area.

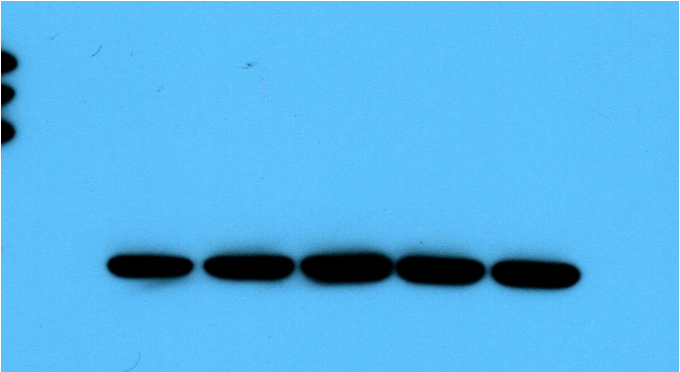
Representative strip

**GAPDH antibody (Proteintech, Cat.60004-1-Ig, 1:5000)**

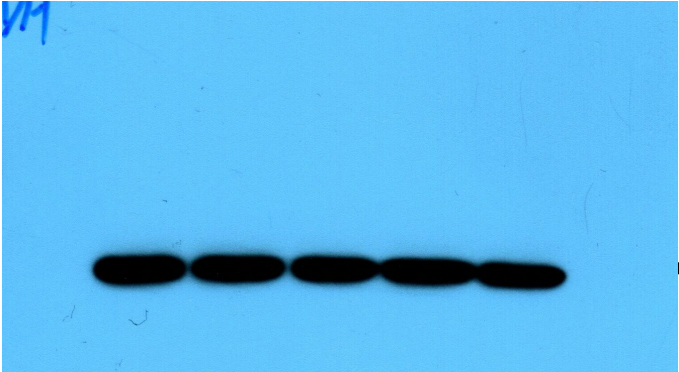
**Repeat 1**



**Repeat 2**



**Repeat 3**



GAPDH

36kDa

NIA, non-interest area.

Representative strip