

**Reduction in Carbonic Anhydrase Activity in the Tongue Epithelium and Submandibular Gland in Zinc-Deficient Rats**

Tomoko Goto, Michio Komai, Bruce P. Bryant and Yuji Furukawa

The scale bars in figures 3, 4 and 5 were missing. For the correct sizes see below:

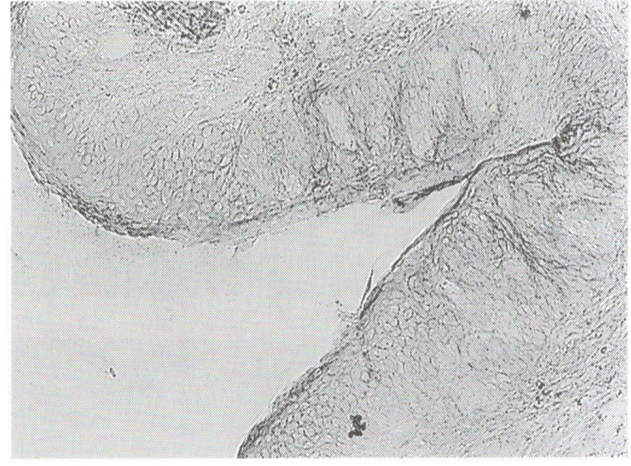
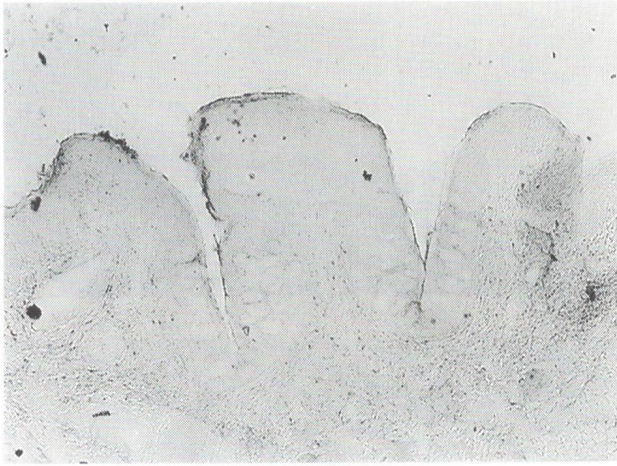


Figure 3: Specificity control, cryostat sections at low and high magnification of the rat circumvallate papilla and surrounding tissue, incubated to reveal carbonic anhydrase activity with  $10^{-5}$ M acetazolamide. A positive reaction is indicated by a black deposit at sites of enzyme activity. Bar = 100  $\mu$ m.

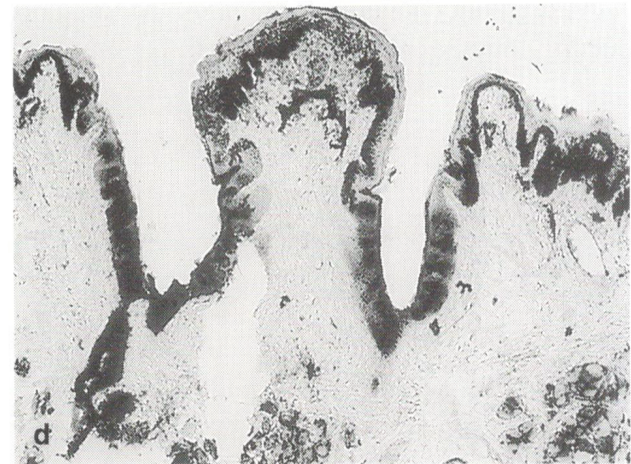
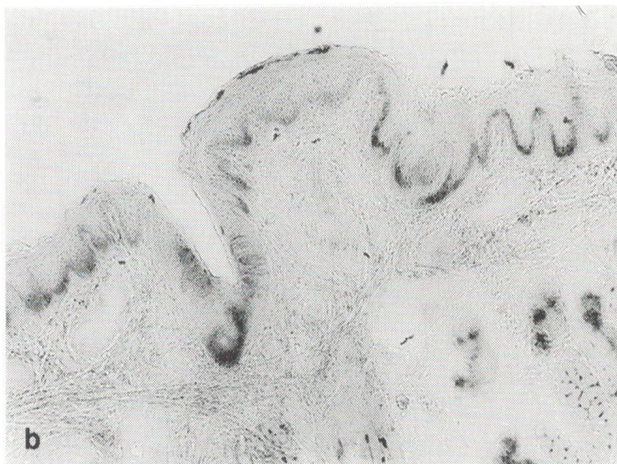
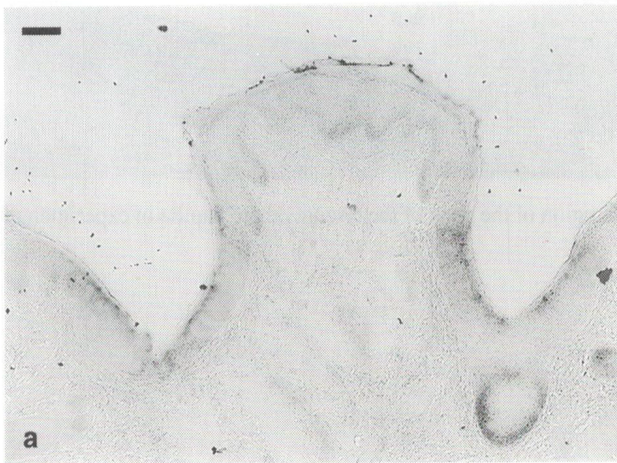


Figure 4: Cryostat sections of the rat circumvallate papilla and surrounding tissue, incubated to reveal carbonic anhydrase activity. A positive reaction is indicated by a dark brown deposit at sites of enzyme activity. a, Zn-Def; b, Low-Zn; c, Zn-Suf; d, Pair-fed. Bar = 100  $\mu$ m.

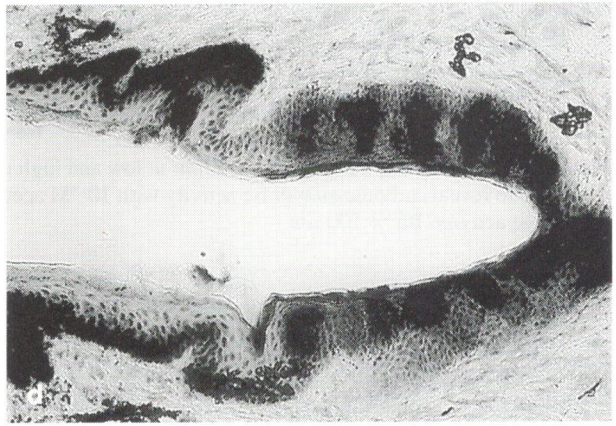
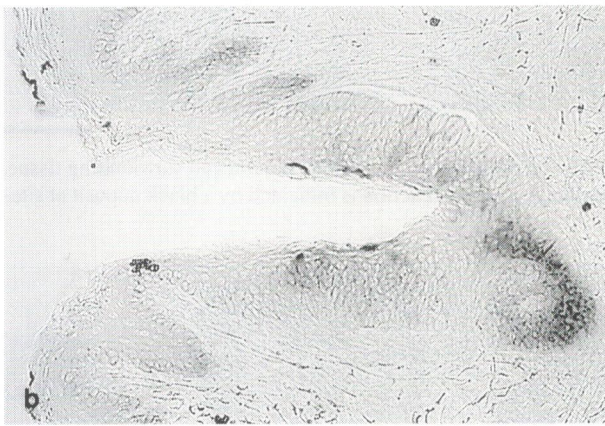
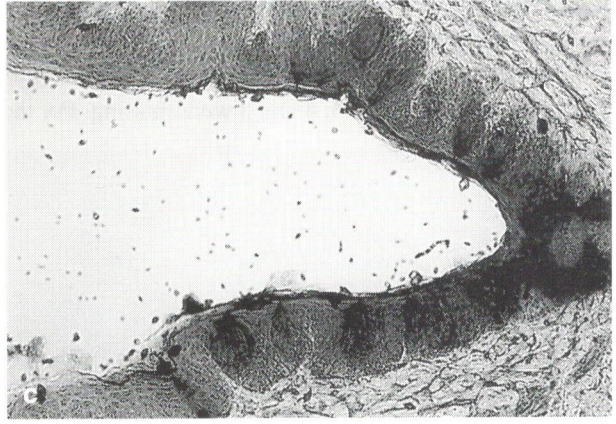
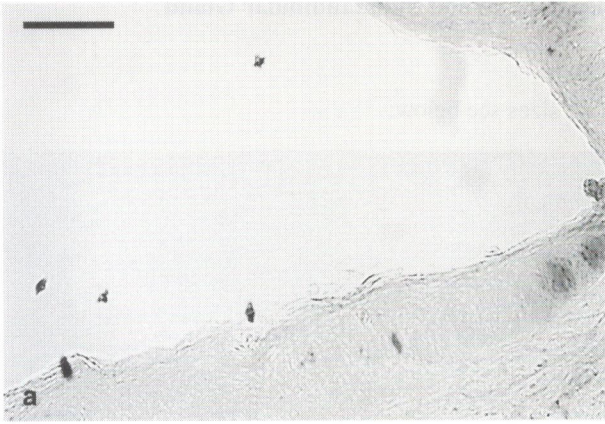


Figure 5: Higher magnification of cryostat sections showing epithelial region of the neck of the circumvallate papilla in experimental rats. a, Zn-Def; b, Low-Zn; c, Zn-Suf; d, Pair-fed. Bar = 100  $\mu$ m.