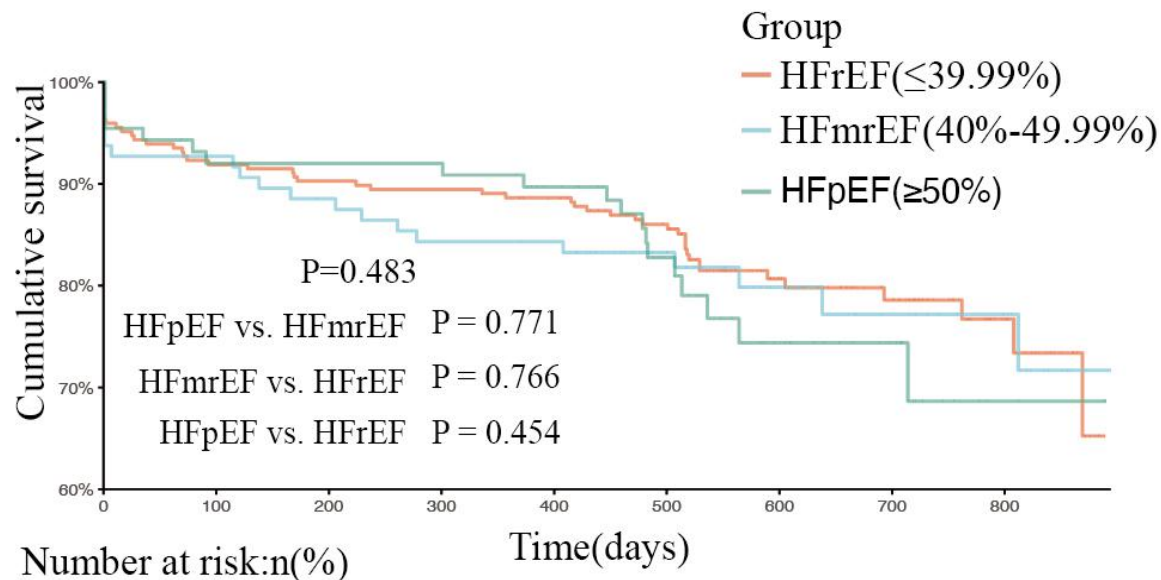


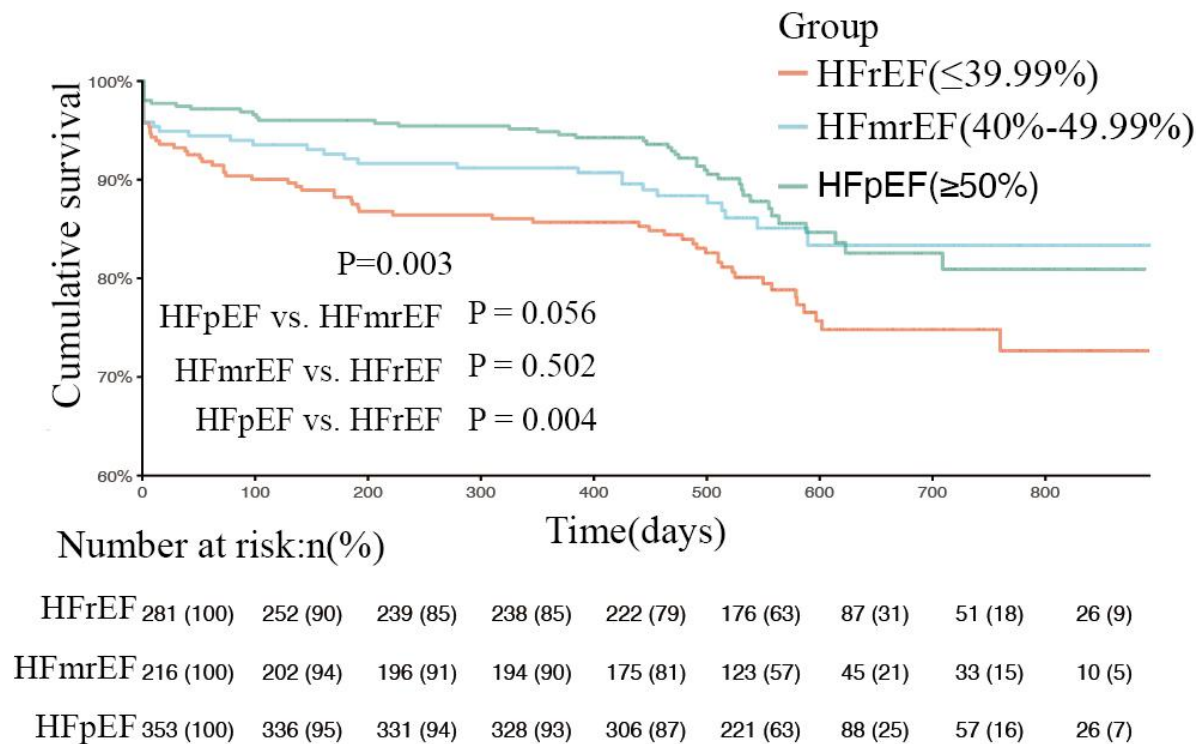
Variable		HFref		HFmrEF		HFrEF	
		HR (95% CI)	<i>P</i>	HR (95% CI)	<i>P</i>	HR (95% CI)	<i>P</i>
QRS(%) ^a							
	Q2	—	—	—	—	0.397(0.21-0.749)	0.004
	Q3	—	—	—	—	0.371(0.19-0.724)	0.004
Age (years) ^b							
	60-69	0.787(0.389-1.591)	0.504	—	—	—	—
	≥70	1.98(1.058-3.706)	0.033	—	—	—	—
BMI (kg/m ²) ^c							
	24-27.9	—	—	—	—	0.762(0.453-1.282)	0.306
	≥28	—	—	—	—	0.172(0.041-0.722)	0.016
Myocardial infarction		—	—	3.731(1.304-10.675)	0.014	1.947(1.062-3.571)	0.031
Hb (g/L)		—	—	0.969(0.944-0.996)	0.022	0.982(0.972-0.992)	0.000
ACE inhibitors/ARBs		0.373(0.223-0.624)	0.000	—	—	—	—
BNP (pg/mL)		1(1-1)	0.003	1(1-1.001)	0.050	1(1-1)	0.010
Sodium (mmol/L)		0.904(0.866-0.944)	0.000	—	—	—	—
LAD (mm)		—	—	1.089(1.03-1.152)	0.003	1.029(1.013-1.046)	0.000
Stroke and TIA		1.876(1.015-3.469)	0.045	—	—	—	—
Creatinine (μmol/L)		—	—	1.007(0.999-1.015)	0.067	—	—

Adjusted for gender, age, coronary disease, SBP, DBP, Hb, WBC, FBP, AST, ALT, BNP, TC, LDL-c, Sodium, Creatinine, BUN, BNP, BMI, LAD, LVEDD, QRS fraction, myocardial infarction, stroke and TIA, Diuretics, ACE inhibitors/ARBs.

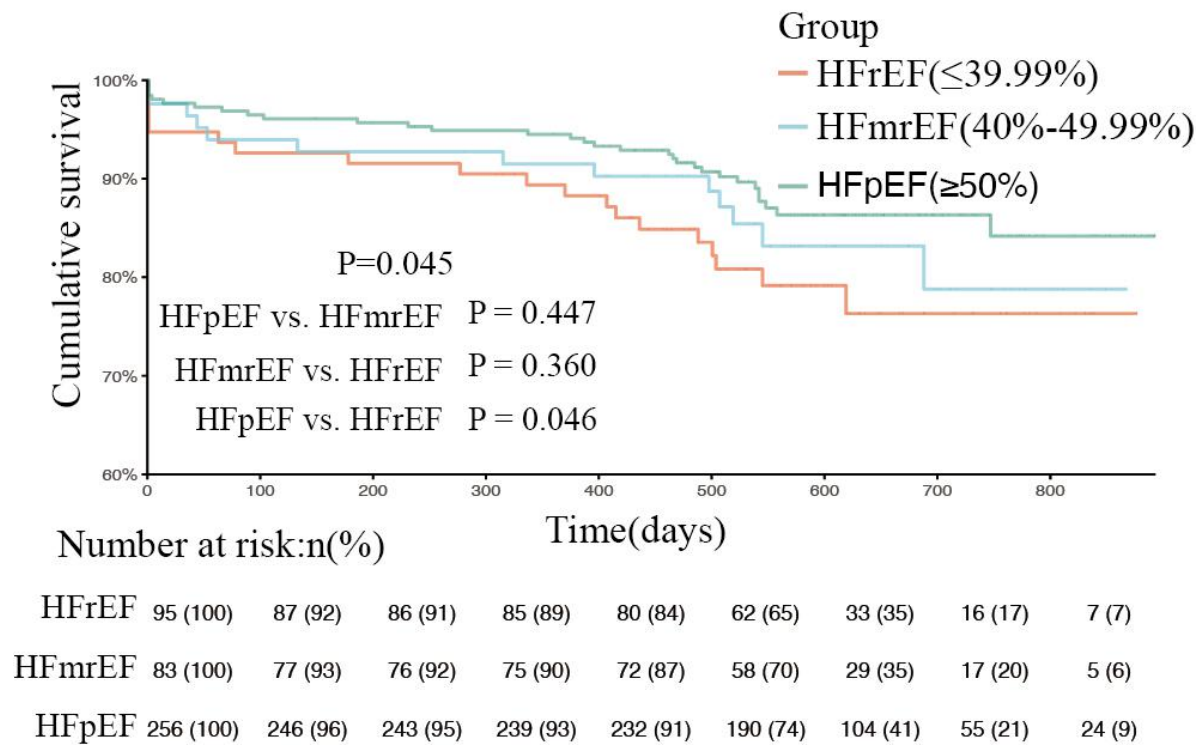


HFrEF	247 (100)	226 (91)	222 (90)	220 (89)	212 (86)	188 (76)	94 (38)	64 (26)	26 (11)
HFmrEF	96 (100)	89 (93)	84 (88)	80 (83)	79 (82)	59 (61)	34 (35)	25 (26)	16 (17)
HFpEF	88 (100)	80 (91)	80 (91)	80 (91)	73 (83)	48 (55)	27 (31)	18 (20)	4 (5)

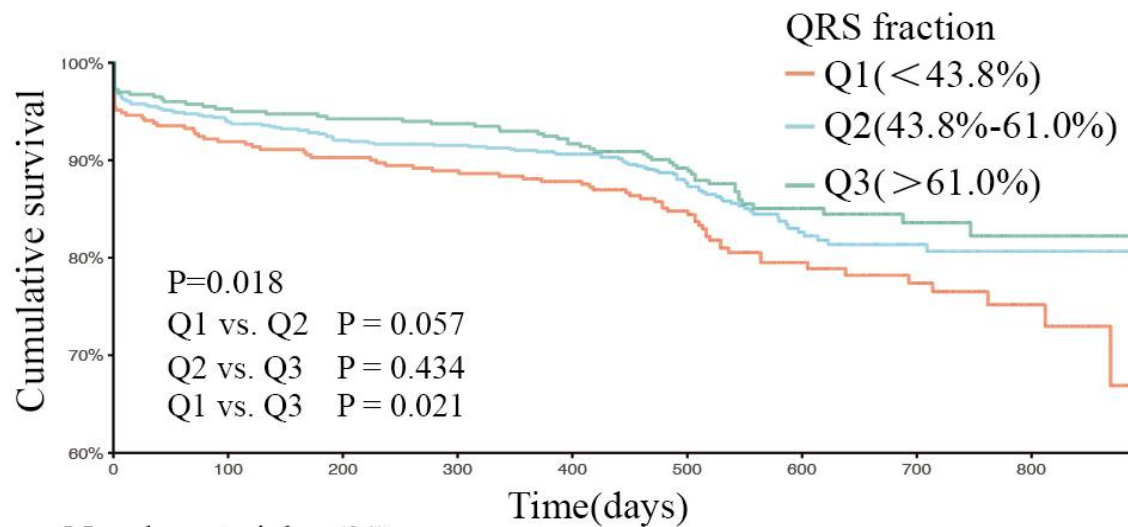
Supplementary Fig 1. KM plots of patients with lower QRS fraction at different ejection fraction levels.



Supplementary Fig 2. KM plots of patients with middle QRS fraction at different ejection fraction levels.



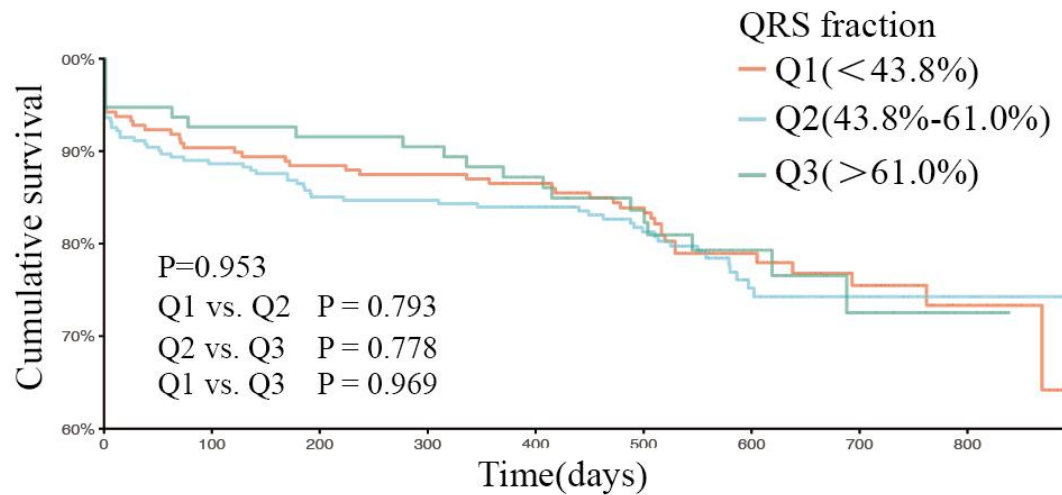
Supplementary Fig 3. KM plots of patients with higher QRS fraction at different ejection fraction levels.



Number at risk:n(%)

Q1	371 (100)	339 (91)	332 (89)	327 (88)	311 (84)	246 (66)	131 (35)	96 (26)	39 (11)
Q2	783 (100)	730 (93)	707 (90)	701 (90)	653 (83)	478 (61)	206 (26)	130 (17)	57 (7)
Q3	401 (100)	379 (95)	374 (93)	369 (92)	354 (88)	293 (73)	160 (40)	84 (21)	34 (8)

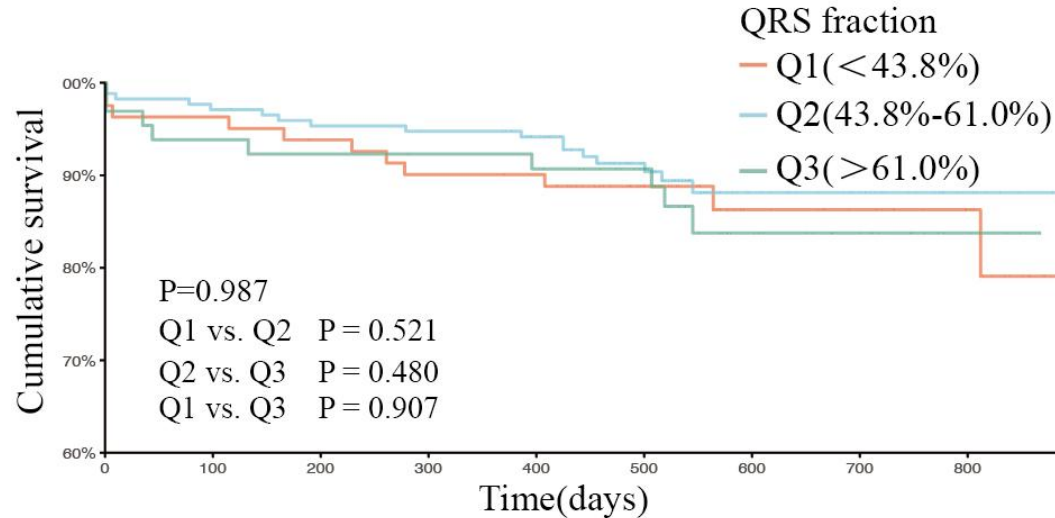
Supplementary Fig 4. KM plots of patients with heart failure at different QRS levels



Number at risk:n(%)

Q1	208 (100)	187 (90)	183 (88)	181 (87)	173 (83)	151 (73)	80 (38)	58 (28)	22 (11)
Q2	282 (100)	249 (88)	235 (83)	234 (83)	219 (78)	170 (60)	82 (29)	47 (17)	23 (8)
Q3	95 (100)	87 (92)	86 (91)	85 (89)	78 (82)	63 (66)	34 (36)	15 (16)	5 (5)

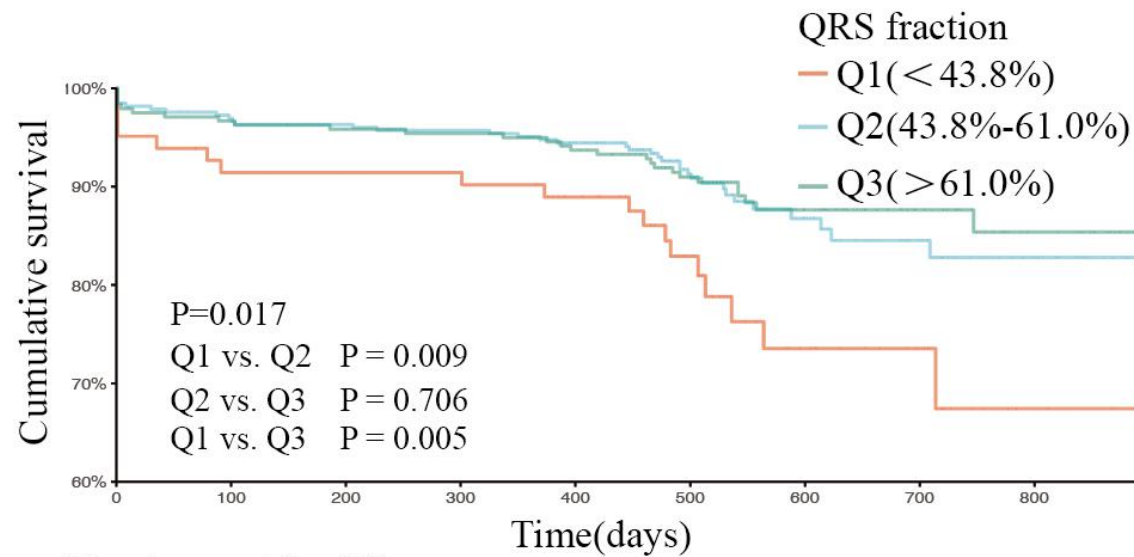
Supplementary Fig 5. KM plots of patients with reduced ejection fraction at different QRS levels



Number at risk:n(%)

Q1	81 (100)	78 (96)	75 (93)	72 (89)	71 (88)	51 (63)	27 (33)	22 (27)	14 (17)
Q2	172 (100)	167 (97)	163 (95)	161 (94)	147 (85)	101 (59)	39 (23)	28 (16)	9 (5)
Q3	65 (100)	60 (92)	59 (91)	58 (89)	57 (88)	49 (75)	23 (35)	15 (23)	5 (8)

Supplementary Fig 6. KM plots of patients with mild reduced ejection fraction at different QRS levels



Number at risk:n(%)

Q1	82 (100)	74 (90)	74 (90)	74 (90)	67 (82)	44 (54)	24 (29)	16 (20)	3 (4)
Q2	329 (100)	314 (95)	309 (94)	306 (93)	287 (87)	207 (63)	85 (26)	55 (17)	25 (8)
Q3	241 (100)	232 (96)	229 (95)	226 (94)	219 (91)	181 (75)	103 (43)	54 (22)	24 (10)

Supplementary Fig 7. KM plots of patients with preserved ejection fraction at different QRS levels